



مركز الإحصاء  
STATISTICS CENTRE



# Deaths Statistics 2016

Date of Release: November 2017

Publication reference code: SCAD3220875

## Table of Contents

LIST OF FIGURES .....	3
LIST OF TABLES .....	4
INTRODUCTION .....	5
KEY INDICATORS .....	6
KEY POINTS .....	7
LONG-TERM TRENDS .....	7
DEATHS BY GENDER AND REGION .....	8
CRUDE MORTALITY RATE .....	9
AGE SPECIFIC DEATH RATES (ASDR) BY GENDER .....	10
CHILD MORTALITY .....	11
NEONATAL MORTALITY RATE .....	12
INFANT MORTALITY RATE .....	13
UNDER-FIVE MORTALITY RATE .....	14
LIFE EXPECTANCY AT BIRTH .....	15
STATISTICAL TABLES .....	16
EXPLANATORY NOTES .....	20

## List of Figures

Figure 1: Deaths by Citizenship, Abu Dhabi Emirate, 1977-2016	7
Figure 2: Crude Death Rate for Citizens (per 1000 population) by Gender, Abu Dhabi Emirate, 1977-2016	8
Figure 3: Crude Death Rate (per 1000 population) by Citizenship, Gender and Region, Abu Dhabi Emirate, 2016	9
Figure 4: Age Specific Deaths Rate for Citizens (per 1000 population) by Age Group (up to 64 years) and Gender, Abu Dhabi Emirate, 2016	10
Figure 5: Age Specific Death Rate for Citizens (per 1000 population) by Age Group (60 years and over) and Gender, Abu Dhabi Emirate, 2016	10
Figure 6: Child Mortality Rates (per 1000 population), Abu Dhabi Emirate, 2016	11
Figure 7: Neonatal Mortality Rates (under 1 month) (per 1000 live births) by Citizenship and Gender, Abu Dhabi Emirate, 2016	12
Figure 8: Infant Mortality Rate (under 1 year) (per 1000 live births) by Citizenship and Gender, Abu Dhabi Emirate, 2016	13
Figure 9: Under-5 years Mortality Rate (per 1000 live births) by Citizenship and Gender, Abu Dhabi Emirate, 2016	14
Figure 10: Average Life Expectancy at Birth (years) by Citizens Gender, Abu Dhabi Emirate, 2014, 2015, 2016	15

## List of Tables

Table 1: Deaths by Citizenship, Region and Gender, Abu Dhabi Emirate, 2016 *	16
Table 2: Crude Death Rate (per 1000 population) by Citizenship and Gender, Abu Dhabi Emirate, 2006, 2011, 2015 and 2016	16
Table 3: Crude Death Rate (per 1000 population) by Citizenship, Gender and Region, Abu Dhabi Emirate, 2016	17
Table 4: Age Specific Death Rate (per 1000 population) by Age Group, Citizenship and Gender, Abu Dhabi Emirate, 2016	17
Table 5: Child Mortality Rates (per 1000 live births) by Gender, Abu Dhabi Emirate, 2016	18
Table 6: Child Mortality Rates (per 1000 live births) for Citizens by Gender, Abu Dhabi Emirate, 2016	18
Table 7: Child Mortality Rates (per 1000 live births) for Non-Citizens by Gender, Abu Dhabi Emirate, 2016	19
Table 8: Average Life Expectancy at Birth by Gender, Abu Dhabi Emirate, 2014, 2015, 2016	19
Table 9: Population Estimates by Citizenship, Gender and Region, Emirate of Abu Dhabi, mid-2016 *	19

## Introduction

This report presents statistics on deaths in Abu Dhabi Emirate in 2016. Statistics of deaths in the years 2006, 2011 and 2015 are included to show trends in mortality. It contains numbers of deaths, age specific mortality rates and child mortality. It also covers life expectancy at birth and survival indicators.

The first section provides a brief summary of the key statistics supported by figures to highlight trends, regional variation and seasonal patterns.

The second section provides detailed statistical tables for readers who wish to analyze the data more closely.

The main source for these statistics is the Department of Health – Abu Dhabi (HAAD). The Statistics Centre Abu Dhabi (SCAD) acknowledges the productive partnership with HAAD which aims to continually improve the coverage and quality of death statistics.

The Explanatory Notes section at the end of this report provides an explanation of the key terms and technical concepts used for mortality and life expectancy. Readers are encouraged to refer to that section in conjunction with reading the statistics and information outlined in the report.

It should be noted that deaths were recorded at place of death registration, rather than the place of the deceased's usual residence, which may result in registering the death to a region which differs than the origin region of deceased. For this reason, death rates at a regional level should be treated with caution....

## Key indicators

<b>Deaths</b>	<b>3,282</b>
Citizens	1,120
Non- Citizens	2,160
<b>Crude mortality rate (per 1000 population)</b>	<b>1.1</b>
Citizens	2.0
Non- Citizens	0.9
<b>Infant mortality rate (less than one month) (per 1000 live births)</b>	<b>4.9</b>
Males	5.6
Females	4.1
<b>Infant mortality rate - less than one year (per 1000 live births)</b>	<b>7.0</b>
Males	7.6
Females	6.3
<b>Under-5 mortality rate (per 1000 live births)</b>	<b>8.8</b>
Males	9.7
Females	7.9

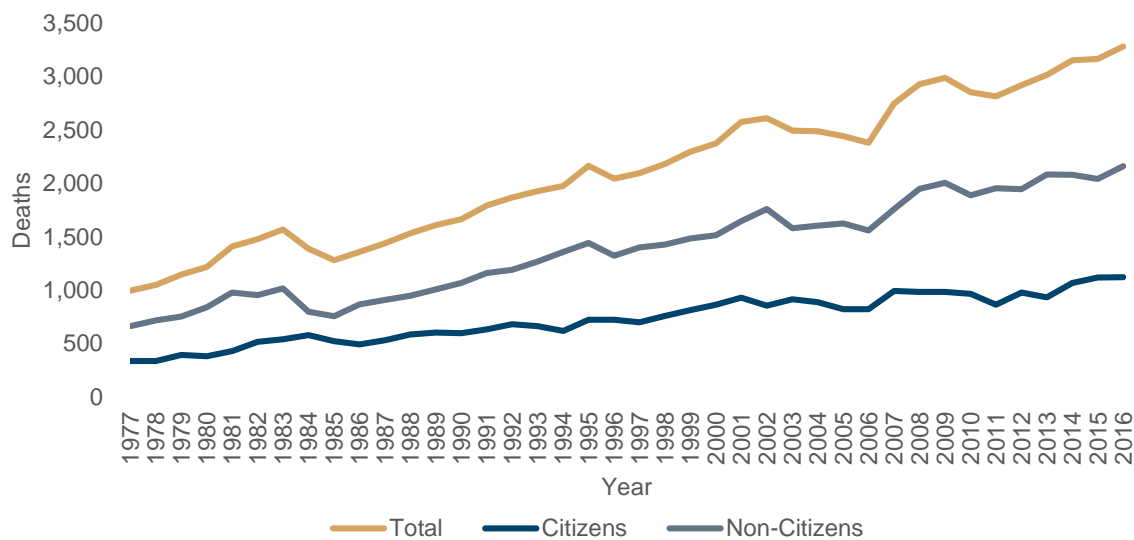
## Key Points

- In Abu Dhabi Emirate, there were 3,282 deaths in 2016, compared with 2,380 in 2006.
- The citizens deaths are 1,120 deaths, with 683 male deaths;
- The non-citizens Deaths are 2,160 deaths, with 1,590 male deaths.
- The crude death rate for citizens has decreased to 2.0 deaths (per 1000 population) in 2016,
- The infant mortality rate for citizens was 7.7 (per 1000 live births), with rates of 8.2 for males and 7.2 for females.

## Long-term Trends

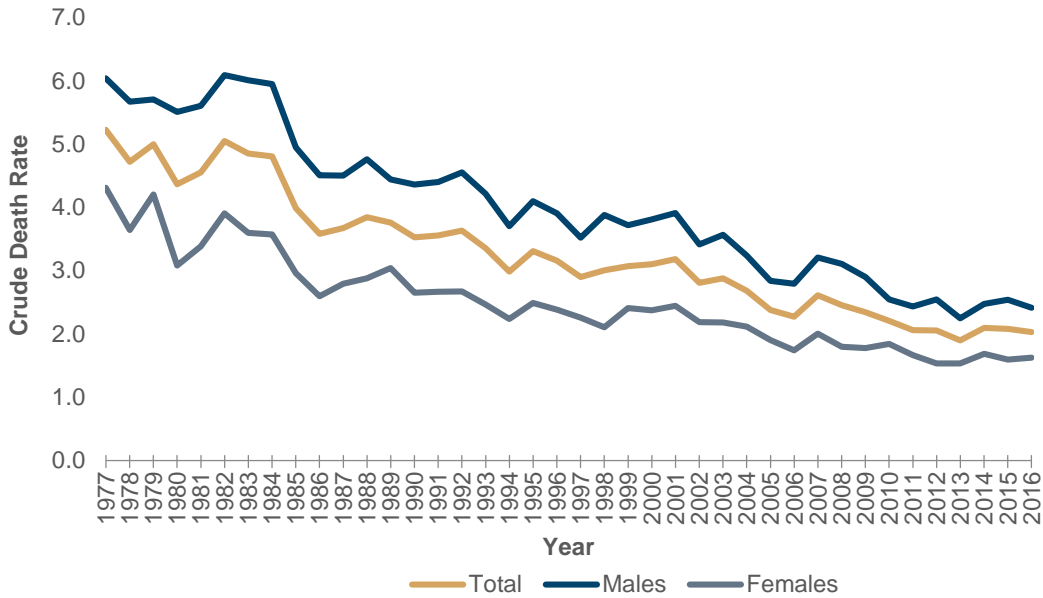
- The crude death rate has decreased from 3.7 deaths (per 1000 population) in 1977 to 1.1 deaths (per 1000 population) in 2016.
- The crude death for citizens has decreased from 5.2 deaths (per 1000 population) in 1977 to 2.0 deaths (per 1000 population) in 2016.

**Figure 1: Deaths by Citizenship, Abu Dhabi Emirate, 1977-2016**



Source: Ministry of Health (1977-2005), Department of Health – Abu Dhabi (2006-2016)

**Figure 2: Crude Death Rate for Citizens (per 1000 population) by Gender, Abu Dhabi Emirate, 1977-2016**



Source: Statistics Centre – Abu Dhabi

### Deaths by Gender and Region

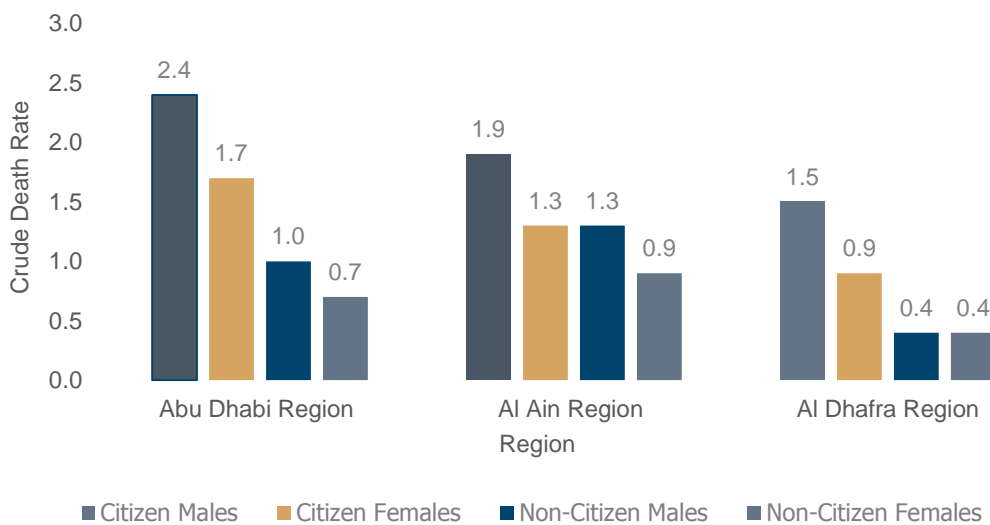
- The Abu Dhabi region accounted the highest number of deaths in the Emirate (58.4%) and the lowest in Al Dhafra region (4.8%).
- The percentage of deaths among non-citizens is 93.2% higher than that of citizens.
- The proportion of males deaths is higher than that of females (2.3 deaths per male versus 1 female).



## Crude mortality rate

- The total crude mortality rate in Abu Dhabi Emirate averaged 1.1 per 1,000 population in 2016.
- The crude death rate for citizens decreased to 2.0 in 2016, a decrease of 12.0% over 2006.
- The crude death rate for non-citizens decreased to 0.9 in 2016, a decrease of 34.3% over 2006.
- The gross crude mortality rate in the Abu Dhabi region (1.1) was lower than in Al Ain region (1.3), and the lowest rate was in Al Dhafra region (0.5).

**Figure 3: Crude Death Rate (per 1000 population) by Citizenship, Gender and Region, Abu Dhabi Emirate, 2016**

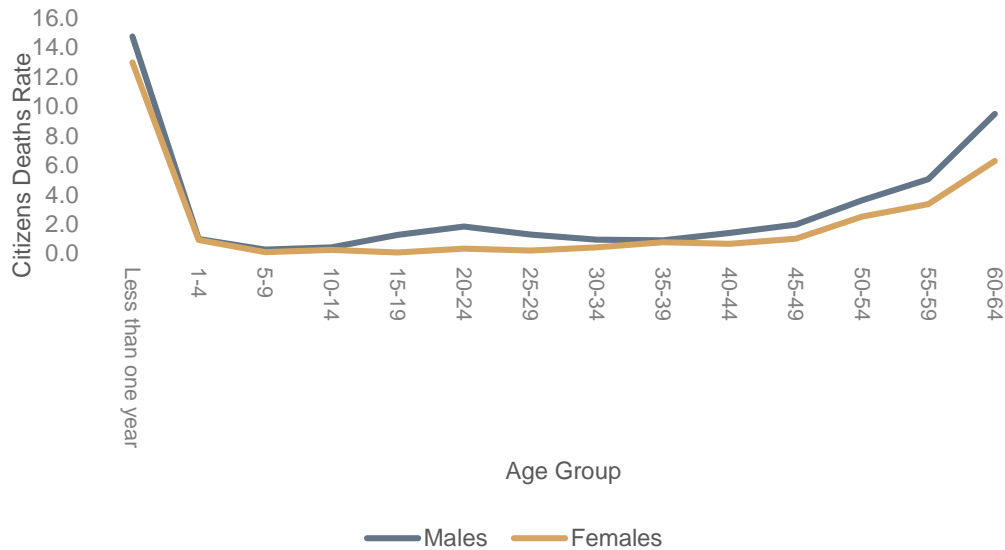


Source: Statistics Centre – Abu Dhabi

## Age Specific Death Rates (ASDR) by gender

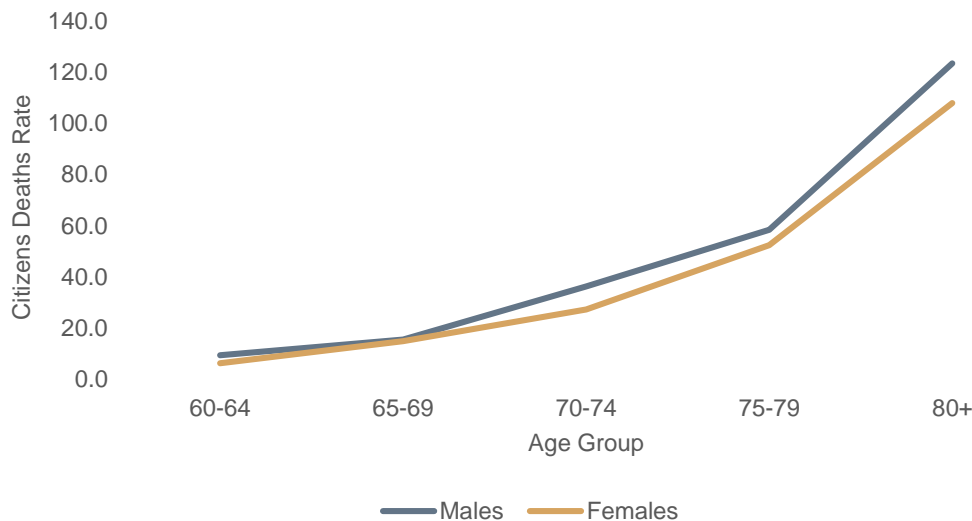
- The age-specific death rate of citizens indicates a higher rate among males than females in all age groups.
- Differences in age specific death rate among males and females between the ages of 15-30 and over 40 years of age are increasing.

**Figure 4: Age Specific Deaths Rate for Citizens (per 1000 population) by Age Group (up to 64 years) and Gender, Abu Dhabi Emirate, 2016**



Source: Statistics Centre – Abu Dhabi

**Figure 5: Age Specific Death Rate for Citizens (per 1000 population) by Age Group (60 years and over) and Gender, Abu Dhabi Emirate, 2016**

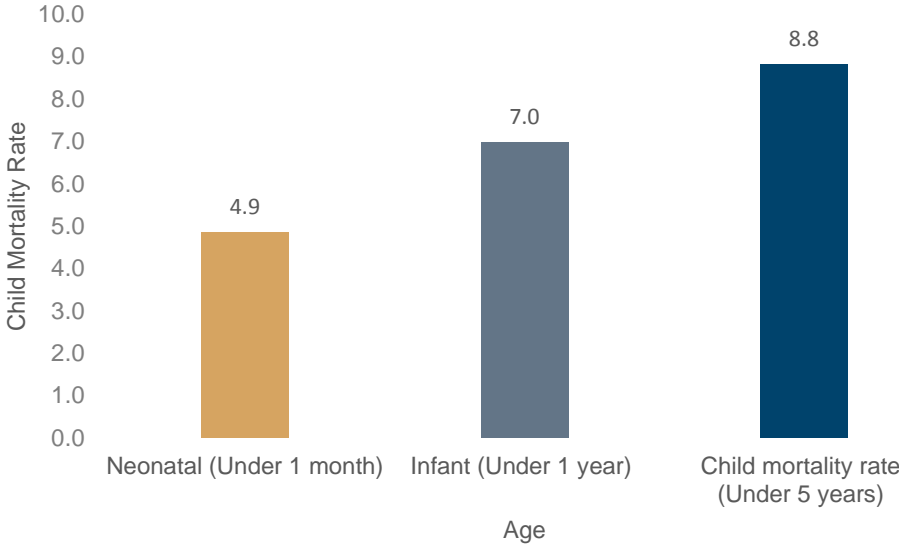


Source: Statistics Centre – Abu Dhabi

# Child mortality

- The neonatal mortality rate (less than one month) was 4.9 cases per 1000 live births.
- The infant mortality rate (less than one year) was 7.0 per 1,000 live births.
- Under-five mortality rate was 8.8 per 1,000 live births in 2016 in Abu Dhabi Emirate.

Figure 6: Child Mortality Rates (per 1000 live births), Abu Dhabi Emirate, 2016

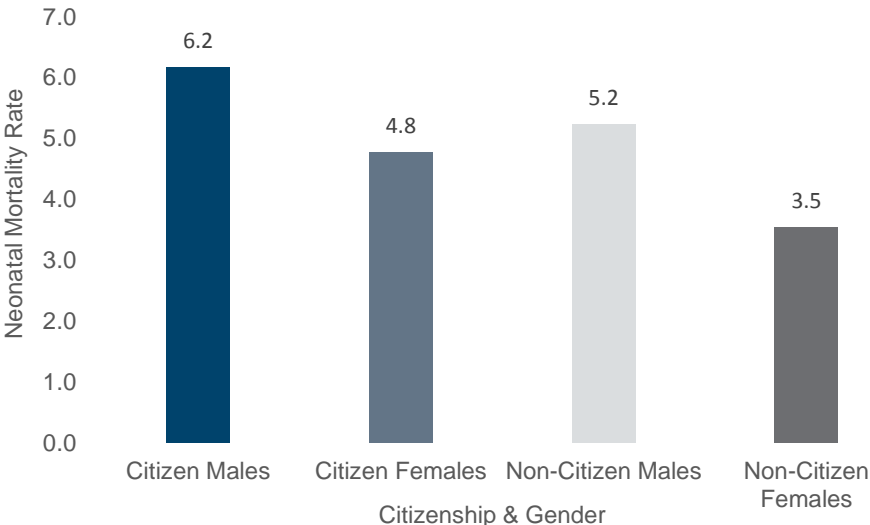


Source: Statistics Centre – Abu Dhabi

## Neonatal mortality rate

- In 2016, neonatal deaths accounted for more than half of the total child mortality of under five years of age in the Abu Dhabi Emirate (55.1%).
- The neonatal mortality rate for males was 5.6 per 1,000 male births, compared with 4.1 cases per 1000 females births.
- The citizen neonatal mortality rate was 5.5 cases per 1,000 live births.
- The non-citizen neonatal mortality rate was 4.4 cases per 1000 live births.

**Figure 7: Neonatal Mortality Rates (under 1 month) (per 1000 live births) by Citizenship and Gender, Abu Dhabi Emirate, 2016**

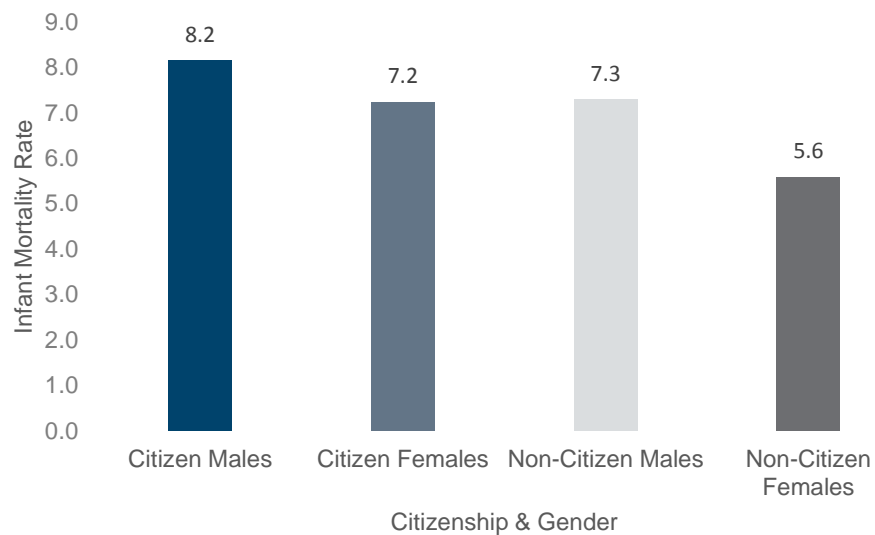


Source: Statistics Centre – Abu Dhabi

## Infant Mortality Rate

- The infant mortality rate (under 1 year) was 7.0 per 1000 live births in 2016 in Abu Dhabi Emirate.
- The infant mortality rate for males is 7.6 cases per 1,000 male births, compared to 6.3 cases per 1000 female births.
- The infant mortality rate for citizens is 7.7 per 1,000 live births (8.2 for males and 7.2 for females).
- The infant mortality rate for non-citizens is 6.5 cases per 1000 live births (7.3 for males and 5.6 for females).

**Figure 8: Infant Mortality Rate (under 1 year) (per 1000 live births) by Citizenship and Gender, Abu Dhabi Emirate, 2016**

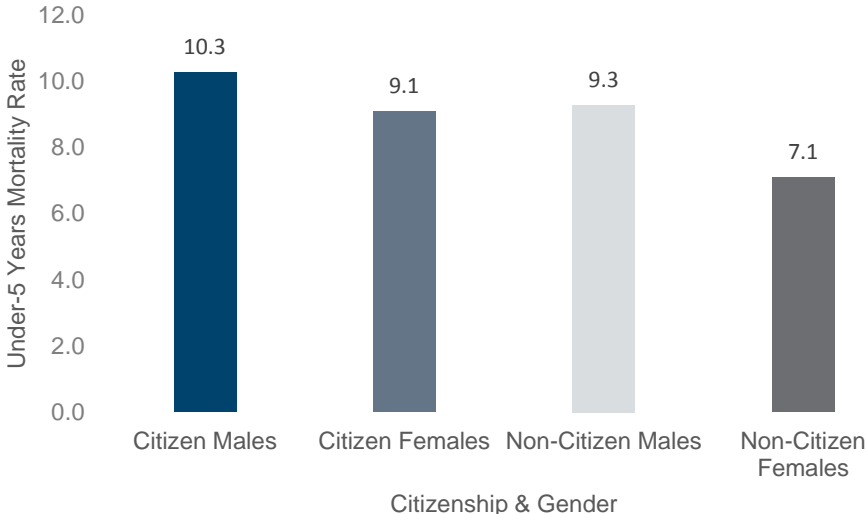


Source: Statistics Centre – Abu Dhabi

## Under-five mortality rate

- The under-five mortality rate in Abu Dhabi Emirate is 8.8 per 1,000 live births in 2016.
- The under-five mortality rate for males was 9.7 cases per 1,000 male births, compared with 7.9 cases per 1000 female births.
- The under-five mortality rate for citizen was 9.7 per 1,000 live births (10.3 for males and 9.1 for females)
- The under-five mortality rate for non-citizens was 8.2 per 1,000 live births (9.3 for males and 7.1 for females).

**Figure 9: Under-5 years Mortality Rate (per 1000 live births) by Citizenship and Gender, Abu Dhabi Emirate, 2016**

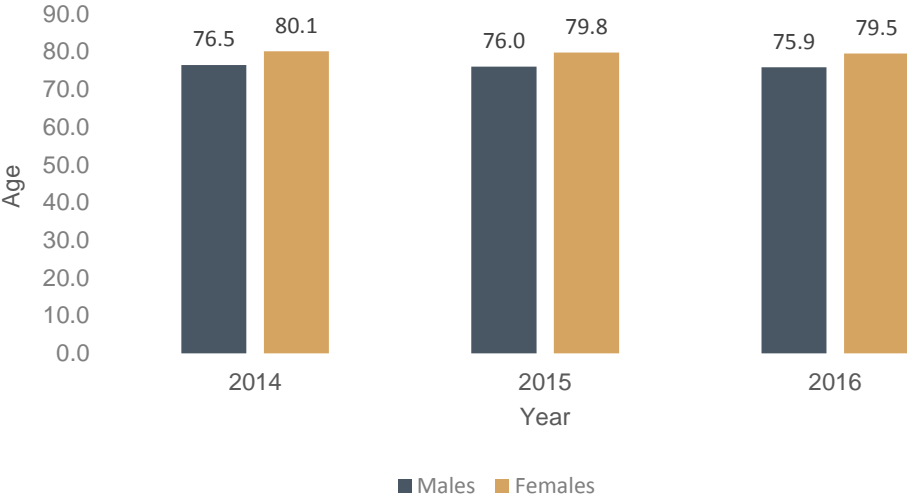


Source: Statistics Centre – Abu Dhabi

## Life expectancy at birth

- Life expectancy at birth for citizen in 2016 was 77.3 years.
- Life expectancy at birth for males citizens in 2016 was 75.9 years.
- Life expectancy at birth for females citizens in 2016 was 79.5 years.

**Figure 10: Average Life Expectancy at Birth (years) by Citizens Gender, Abu Dhabi Emirate, 2014, 2015, 2016**



Source: Statistics Centre – Abu Dhabi

## Statistical Tables

**Table 1: Deaths by Citizenship, Region and Gender, Abu Dhabi Emirate, 2016 \***

Gender & Citizenship	Males	Females	Total
<b>Grand Total</b>	<b>2,274</b>	<b>1,007</b>	<b>3,282</b>
Abu Dhabi Region	1,317	600	1,918
Al Ain Region	671	325	996
Al Dhafra Region	134	25	159
<b>Citizens</b>	<b>683</b>	<b>437</b>	<b>1,120</b>
Abu Dhabi Region	355	242	597
Al Ain Region	223	140	363
Al Dhafra Region	29	11	40
<b>Non-Citizens</b>	<b>1,590</b>	<b>570</b>	<b>2,160</b>
Abu Dhabi Region	961	358	1,319
Al Ain Region	448	185	633
Al Dhafra Region	105	14	119

Source: Department of Health – Abu Dhabi

\* Including one case of gender unknown and two cases of citizenship unknown

**Table 2: Crude Death Rate (per 1000 population) by Citizenship and Gender, Abu Dhabi Emirate, 2006, 2011, 2015 and 2016**

Gender & Citizenship	2006	2011	2015	* 2016
<b>Grand Total</b>	<b>1.4</b>	<b>1.3</b>	<b>1.1</b>	<b>1.1</b>
Males	1.5	1.4	1.2	1.2
Females	1.1	1.3	1.0	1.0
<b>Citizens</b>	<b>2.3</b>	<b>2.1</b>	<b>2.1</b>	<b>2.0</b>
Males	2.8	2.4	2.5	2.4
Females	1.7	1.7	1.6	1.6
<b>Non-Citizens</b>	<b>1.4</b>	<b>1.1</b>	<b>0.9</b>	<b>0.9</b>
Males	1.4	1.2	1.0	1.0
Females	1.2	1.1	0.8	0.7

Source: Statistics Centre – Abu Dhabi

:



**Table 3: Crude Death Rate (per 1000 population) by Citizenship, Gender and Region, Abu Dhabi Emirate, 2016**

Gender & Citizenship	Abu Dhabi Region	Al Ain Region	Al Dhafra Region	Abu Dhabi Emirate
<b>Grand Total</b>	<b>1.1</b>	<b>1.3</b>	<b>0.5</b>	<b>1.1</b>
Males	1.2	1.5	0.5	1.2
Females	0.9	1.0	0.5	1.0
<b>Citizens</b>	<b>2.0</b>	<b>1.6</b>	<b>1.3</b>	<b>2.0</b>
Males	2.4	1.9	1.5	2.4
Females	1.7	1.3	0.9	1.6
<b>Non-Citizens</b>	<b>0.9</b>	<b>1.2</b>	<b>0.4</b>	<b>0.9</b>
Males	1.0	1.3	0.4	1.0
Females	0.7	0.9	0.4	0.7

Source: Statistics Centre – Abu Dhabi

**Table 4: Age Specific Death Rate (per 1000 population) by Age Group, Citizenship and Gender, Abu Dhabi Emirate, 2016**

Age Group	Gender & Citizenship								
	Citizens			Non-Citizens			Total		
	Males	Females	Total	Males	Females	Total	Males	Females	Total
<b>total</b>	<b>2.4</b>	<b>1.6</b>	<b>2.0</b>	<b>1.0</b>	<b>0.7</b>	<b>0.9</b>	<b>1.2</b>	<b>1.0</b>	<b>1.1</b>
Less than one year	14.7	13.0	13.9	10.4	8.0	9.2	12.0	9.9	10.9
1-4	1.0	0.9	1.0	0.8	0.6	0.7	0.9	0.8	0.8
5-9	0.3	0.1	0.2	0.3	0.2	0.2	0.3	0.1	0.2
10-14	0.4	0.3	0.4	0.2	0.1	0.1	0.3	0.1	0.2
15-19	1.3	0.1	0.7	0.3	0.0	0.2	0.6	0.0	0.4
20-24	1.8	0.3	1.1	0.3	0.1	0.2	0.9	0.1	0.4
25-29	1.3	0.2	0.8	0.4	0.2	0.3	1.0	0.1	0.3
30-34	1.0	0.4	0.7	0.4	0.2	0.3	1.0	0.1	0.4
35-39	0.9	0.8	0.8	0.6	0.3	0.5	1.4	0.2	0.5
40-44	1.4	0.7	1.0	0.8	0.4	0.7	2.0	0.2	0.7
45-49	2.0	1.0	1.5	1.6	0.7	1.3	3.2	0.4	1.3
50-54	3.6	2.5	3.1	3.1	1.1	2.4	5.8	0.8	2.6
55-59	5.1	3.4	4.2	6.9	2.4	5.4	10.5	1.7	5.1
60-64	9.5	6.3	8.0	13.5	6.5	10.6	16.1	4.9	9.8
65-69	15.5	14.9	15.2	25.8	15.2	21.0	25.3	12.9	18.7
70-74	36.3	27.3	31.6	30.7	23.0	27.1	33.4	24.9	29.1
75-79	58.4	52.4	55.4	51.2	54.3	52.8	55.0	53.8	54.4
80+	123.4	107.9	116.2	81.1	103.7	93.8	100.9	110.5	105.6

Source: Statistics Centre – Abu Dhabi

**Table 5: Child Mortality Rates (per 1000 live births) by Gender, Abu Dhabi Emirate, 2016**

Item	Males	Females	Total
per 1000 live births			
Neonatal Mortality Rate (Under 1 month)	5.6	4.1	4.9
Infant mortality rate (Under 1 year)	7.6	6.3	7.0
Child mortality rate (Under 5 years)	9.7	7.9	8.8
Number			
Deaths by Gender (Under 1 month)	114	79	193
Deaths by Gender (Under 1 year)	155	122	277
Deaths by Gender (Under 5 years)	196	154	350
Births *	20,268	19,463	39,731

Source: Statistics Center - Abu Dhabi, Department of Health – Abu Dhabi

\* Including those born abroad UAE and registered by Department of Health – Abu Dhabi

**Table 6: Child Mortality Rates (per 1000 live births) for Citizens by Gender, Abu Dhabi Emirate, 2016**

Item	Males	Females	Total
per 1000 live births			
Neonatal Mortality Rate (Under 1 month)	6.2	4.8	5.5
Infant mortality rate (Under 1 year)	8.2	7.2	7.7
Child mortality rate (Under 5 years)	10.3	9.1	9.7
Number			
Deaths by Gender (Under 1 month)	53	39	92
Deaths by Gender (Under 1 year)	70	59	129
Deaths by Gender (Under 5 years)	88	74	162
Births *	8,581	8,151	16,732

Source: Statistics Center - Abu Dhabi, Department of Health – Abu Dhabi

\* Including those born abroad UAE and registered by Department of Health – Abu Dhabi

**Table 7: Child Mortality Rates (per 1000 live births) for Non-Citizens by Gender, Abu Dhabi Emirate, 2016**

Item	Males	Females	Total
per 1000 live births			
Neonatal Mortality Rate (Under 1 month)	5.2	3.5	4.4
Infant mortality rate (Under 1 year)	7.3	5.6	6.5
Child mortality rate (Under 5 years)	9.3	7.1	8.2
Number			
Deaths by Gender (Under 1 month)	61	40	101
Deaths by Gender (Under 1 year)	85	63	148
Deaths by Gender (Under 5 years)	108	80	188
Births	11,640	11,271	22,911

Source: Statistics Center - Abu Dhabi, Department of Health – Abu Dhabi

**Table 8: Average Life Expectancy at Birth by Gender, Abu Dhabi Emirate, 2014, 2015, 2016**

Year	Males	Females	Total
2014	76.5	80.1	77.5
2015	76.0	79.8	77.0
2016	75.9	79.5	77.3

Source: Statistics Center - Abu Dhabi

**Table 9: Population Estimates by Citizenship, Gender and Region, Emirate of Abu Dhabi, mid-2016 \***

Gender / Citizenship	Abu Dhabi Region	Al Ain Region	Al Dhafra Region	Abu Dhabi Emirate
<b>Grand Total</b>	<b>1,807,236</b>	<b>766,936</b>	<b>334,001</b>	<b>2,908,173</b>
Males	1,121,963	451,754	283,901	1,857,618
Females	685,273	315,182	50,100	1,050,555
<b>Citizens</b>	<b>293,860</b>	<b>226,285</b>	<b>31,390</b>	<b>551,535</b>
Males	147,713	115,574	19,345	282,632
Females	146,147	110,711	12,045	268,903
<b>Non-Citizens</b>	<b>1,513,376</b>	<b>540,651</b>	<b>302,611</b>	<b>2,356,638</b>
Males	974,250	336,180	264,556	1,574,986
Females	539,126	204,471	38,055	781,652

Source: Statistics Centre – Abu Dhabi

\* Revised Population estimates for mid-2016

# Explanatory Notes

## Glossary of terms used

This report includes some terms of birth and fertility, including the following:

### Death

The death incident is the state of permanent stop of all aspects of life of an individual at any time after birth, including psychosis, cardiac arrest, respiratory arrest and cessation of response. This definition is related to the live-birth, and excludes the category of the stillbirth and all other cases of foetus loss, i.e. spontaneous abortion and induced abortion

### Age-specific mortality rates

The number of deaths per age group occurring during a period of time (usually one calendar year) per 1000 population in the same age group in the middle of that period.

$$1000 \times \frac{\text{Number of deaths within a year of a certain age group}}{\text{Mid – year population for that age group}}$$

### Crude mortality rate

The number of deaths occurring over a period of time (usually one calendar year) per 1000 population in the middle of that period.

$$1000 \times \frac{\text{Number of infant deaths during the year}}{\text{Mid – year population}}$$

### Infant mortality rate (less than one year)

Number of infant deaths per 1000 live births over a period (usually one calendar year).

$$1000 \times \frac{\text{Number of deaths + infants within a year}}{\text{Number of live births during the year}}$$

### Neonatal mortality rate (less than one month)

The number of deaths within a year of infants whose age is 28 days or less per 1000 live births within the same year.

$$1000 \times \frac{\text{Number of infant deaths aged 28 days or less within a year}}{\text{Number of live births during the year}}$$

### **Under-five mortality rate (per 1,000 live births)**

The number of under-five child deaths during a given year per 1,000 births during the same year.

$$1000 \times \frac{\text{Number of deaths of children under the age of 5 years}}{\text{Number of live births during the year}}$$

### **Data sources**

Preliminary data for 2016 were obtained from HAAD, and the data were processed before being passed to SCAD for further analysis.

### **Technical Notes**

Population in the base year: The mid-year population estimates are the main population of the Emirate of Abu Dhabi and its three regions.

Occurrence and registration: Deaths are registered at the place of registration instead of the usual place of residence of the deceased, which may lead to death registration in a territory that may differ from the territory of the deceased (eg large hospital locations).

Abu Dhabi Health Authority (HAAD) improved data collection by implementing a new notification system, leading to a significant change in comparison to the previous year. The system was tested in mid-2010.

The lee-carter method was used to calculate life expectancy at birth.

### **Additional information and the next version**

For more information on mortality statistics, life tables and other official statistics, please visit the statistics link on the Statistics Center website: <http://www.scad.ae>

The next issue is expected to be published in November 2018.

## **Disclaimer and Terms of Use**

The Statistics centre Abu Dhabi operates this website to meet the needs of government agencies, individuals and various groups of society and businesses. SCAD is not responsible for any loss or damage caused to users due to the misuse of the statistics provided on the site in good faith by the centre. The official user at the time or for any particular purposes is the users of the statement, and the user acknowledges that he disclaims and disclaims the responsibility of the centre for legal obligations relating to errors that may occur outside the control of the centre or without his knowledge as waived N the right to obtain compensation for losses and damages that may be inflicted as a result of that error.

The official statistics issued by the Statistics Center - Abu Dhabi on or accessible through this website are protected by copyright only when indicated otherwise. Users may reproduce the contents of the website (including leaflets, tables, etc.) in whole or in part with different without obtaining special permission from the Statistics Center, provided that it is approved by the Center, by clarifying the following:

Source: Statistics Center - Abu Dhabi, year of publication, product name, index number, reference period and page or page number.

رؤيتنا: الريادة والابتكار في الإحصاء  
Our Vision: Leadership and Innovation in Statistics

[www.scad.ae](http://www.scad.ae)