



مركز الإحصاء
STATISTICS CENTRE

Agriculture

in Figures 2013

Release date: August, 2014

Fisheries Stock findings



Agricultural



Introduction

The publication highlights aspects of the agricultural sector; it contains a large array of analytical statistics and indicators on agriculture holdings, livestock and fishery.

The data provided in the release will assist to capture developments of the sector and develop integrated policies and strategies; in fulfillment of sustainable development of the agricultural sector.

Agricultural

Holdings



Number and area of plant holdings by region, 2005 to 2013

(Area in donums)

Region		2005	2010	2012	2013*
Total	No	23,704	24,290	24,394	24,394
	Area	739,686	747,679	752,839	752,839
Abu Dhabi	No	4,793	3,837	3,837	3,837
	Area	111,452	95,483	95,483	95,483
Al Ain	No	11,529	11,894	11,985	11,985
	Area	438,820	441,637	446,898	446,898
Al Gharbia	No	7,382	8,559	8,572	8,572
	Area	189,414	210,559	210,458	210,458

* Data in 2012 and 2013 are similar

Source: Abu Dhabi Food Control Authority

Cultivated Area in the Emirate of Abu Dhabi is estimated at about 752,839 donums, of which 40% is Fruit Trees, 2% is Field Crops, and 2% is Vegetables. There has been a significant growth in the area of Cultivated Land over the Period From 2005 to 2013, mostly around Al Ain region, which has 59% of the Total area of plant holdings in the Emirate.

Percentage distribution of agricultural holdings area by region, 2013



Agricultural Producer Price Index



Agricultural producer price index, 2012 and 2013

(100 = 2010)

Crop	2012	2013
All products	103.9	107.3
Tomato	109.3	117.3
Pepper	110.2	118.1
Cucumber	155.5	144.5
Marrow	116.8	107.3
Water Melon	119.0	113.3
Sweet Melon	160.6	153.3
Onion	116.0	109.6
Beans	99.0	103.6
Peas	114.1	112.3
Eggplant	177.7	167.2
Cauliflower	99.2	109.7

The general Agricultural Producer Price Index has been increased by 3.8% in 2013 compared with 2012 and with 2010 as a reference year. Important crops that contributed to this rise are Broad Bean by 10.6%, Pepper by 7.3%, Cucumber by 7.2%, Garden Rocket by 6.8%, Carrot by 5.5%, Lettuce by 5.5% Coriander by 5.2%, Parsley by 5.1%, and Peas by 4.6%, Turnip by 4.5%, Tomato by 3.8% Meanwhile crops of watermelon, Cabbage, Marrow, Corn, Cauliflower, Beans, Potato, Sweet Melon, Onion, Mallwo ,Beets and Eggplant have been decreased by 8.2%, 7.3%, 7.1%, 6.4%, 5.9%, 5.5%, 4.9%, 4.7%, 4.6% 2.8%, 2.7% and 1.6% respectively.

Contd. /Agricultural producer price index, 2012 and 2013

(100 = 2010)

Crop	2012	2013
Broad Bean	111.0	102.9
Cabbage	105.5	111.3
Lettuce	105.3	102.3
Jews Mallow	109.1	114.8
Coriander	96.5	93.9
Beets	110.5	116.1
Parsley	127.1	120.9
Potato	130.9	122.6
Corn	89.6	93.6
Turnip	98.0	103.4
Carrot	76.5	81.7
Garden Rocket	107.9	110.7

Source: Statistic Centre - Abu Dhabi

Livestock



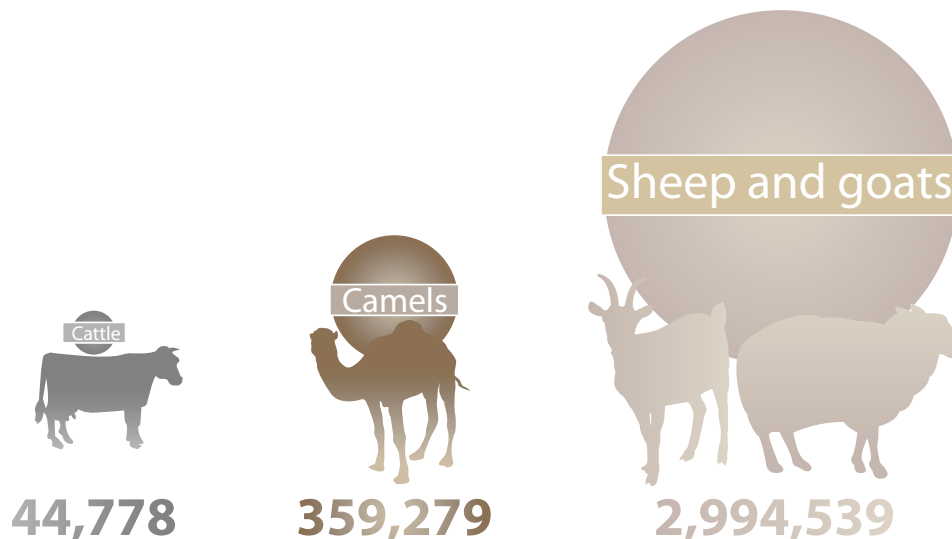
Number of sheep, goats, cattle and camels by region 2010 to 2013

Year		Total	Abu Dhabi	Al Ain	Al Gharbia
2010	Sheep& goats	2,041,902	340,699	1,316,938	384,265
	Cattle	39,778	3,764	34,911	1,103
	Camels	275,385	42,916	164,808	67,661
2011	Sheep& goats	2,080,623	379,883	1,308,974	391,766
	Cattle	39,692	3,948	34,640	1,104
	Camels	277,577	45,279	164,009	68,289
2012	Sheep& goats	2,551,432	525,720	1,577,767	447,945
	Cattle	40,046	4,457	34,441	1,148
	Camels	330,215	63,452	185,242	81,521
2013	Sheep& goats	2,994,539	641,280	1,841,504	511,755
	Cattle	44,778	6,406	37,146	1,226
	Camels	359,279	69,908	195,878	93,493

Source: Abu Dhabi Food Control Authority

Livestock rearing is one of the most important sub-activities of the agricultural sector since it contributes to employment in rural and Bedouin area, thus helping the residents of those areas to earn a decent Livelihood, and traditionally constituting the key economic activity in most rural areas. Where Livestock Population has been growing markedly during the Period 2010 to 2013. The activity therefore merits Particular attention so that it can be developed and preserved.

Number of sheep, goats, cattle and camels 2013



Fisheries



Quantity and Value of Fish Catch by Major Fish Families, 2012 and 2013

Quantity in Tons, Value in 000 AED

Fish families	2012		2013	
	Quantity	Value	Quantity	Value
Total	4,399	80,779	3,862	84,822
Carangidae	982	9,481	533	7,483
Haemulidae	298	2,538	286	2,399
Lethrinidae	734	11,498	739	12,202
Lutjanidae	45	386	32	189
Portunidae	112	1,496	131	2,255
Scombridae	1,150	26,983	1,015	29,247
Epinephelidae	789	25,352	824	27,887
Sparidae	73	800	65	734
Others	216	2,246	240	2,428

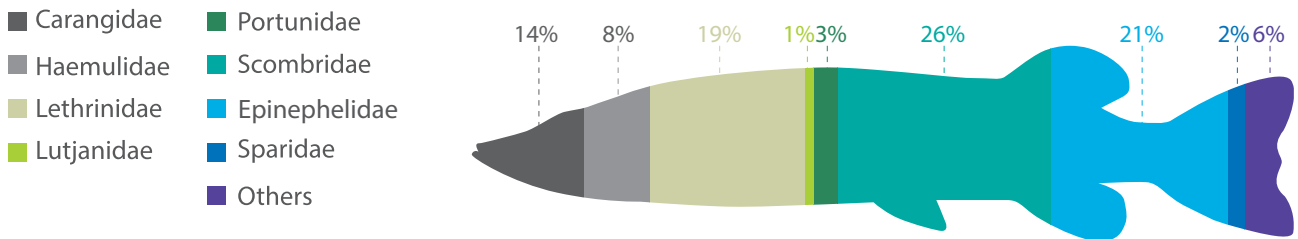
Source: Environment Agency - Abu Dhabi

Fish is an important food and a source of living and income for vast populations around the world. It is estimated that 95 percent of the people relying on fish for their livelihood live in developing countries. A renewable natural resource, and the source of a basic food for coast inhabitants, fisheries are a significant component in the generation of national income.

The demand for fish is on the rise in recent years, a trend that is likely to continue in response in response to population growth, rise of income levels and improvements in dietary intake.

Abu Dhabi's 500 km coastline is rich in fish and other marine species. The emirate's territorial waters embrace over 200 islands varying in size and in historical and economic significance.

Percentage distribution of the quantity of fish catch by major fish families, 2013





www.scad.ae

Our Statistics Provide Solutions & Development

Tel: +971 2 8100000 - Fax: +971 2 8100800

P.O. Box: 6036, Abu Dhabi, U.A.E.



adstatistics