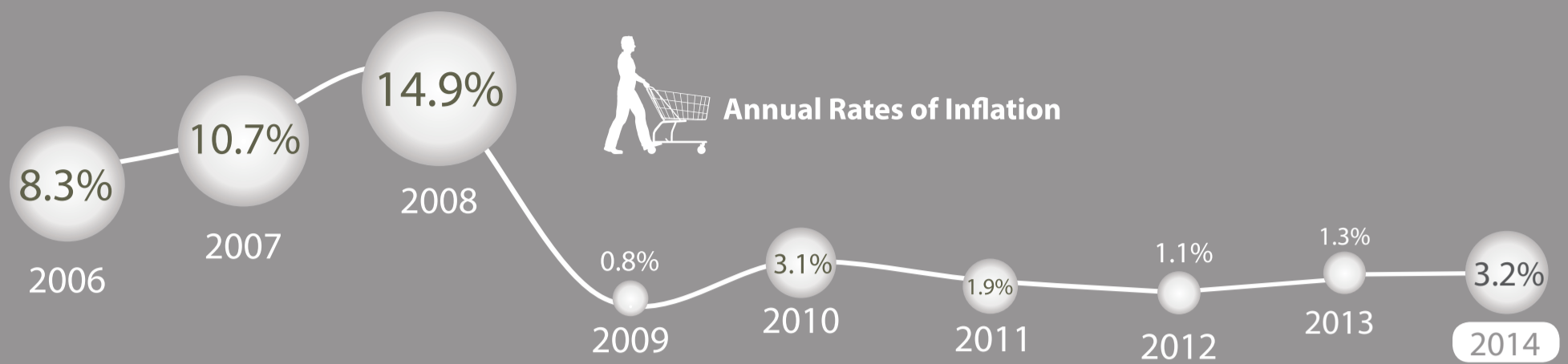


Inflation in Abu Dhabi

February 2015



مركز الإحصاء
STATISTICS CENTRE



Inflation

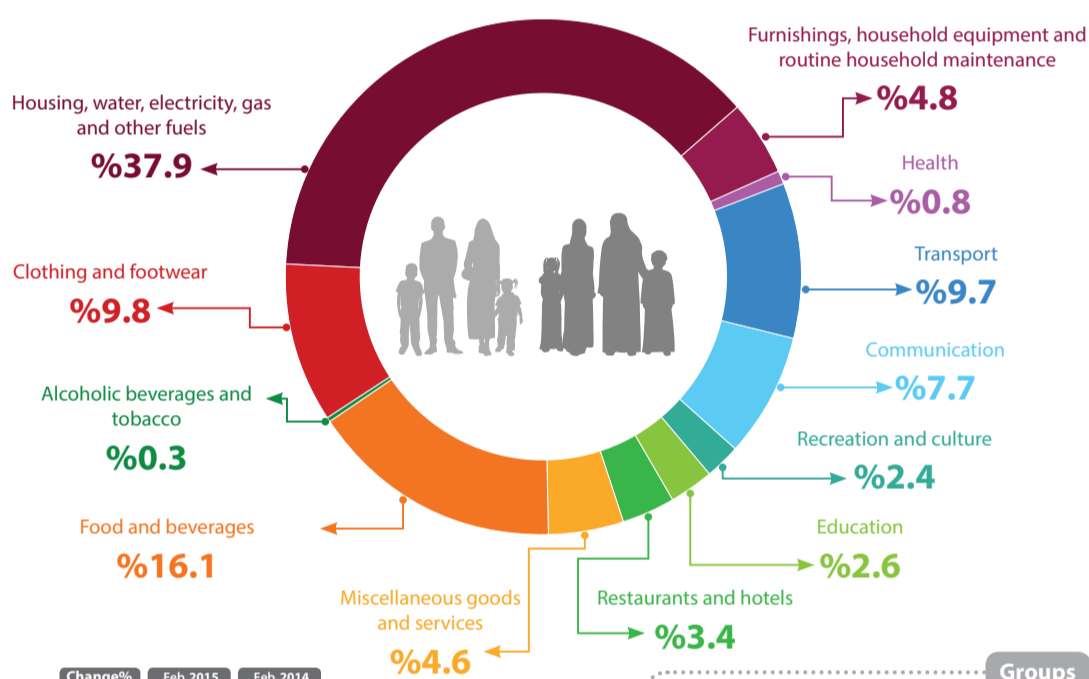
The inflation rate is a measure of how prices are changing over time. It is calculated as the percentage change in the level of prices (CPI) between two time periods.

CPI during 2015 & 2014

	Jan	Feb	Mar	Apr	May	Jun	July	Aug	Sep	Oct	Nov	Dec
2014	126.0	126.3	126.4	126.8	127.0	128.8	128.8	129.3	130.6	130.6	130.5	131.2
2015	132.4	132.1										
Change%	%5.0▲	%4.6▲										

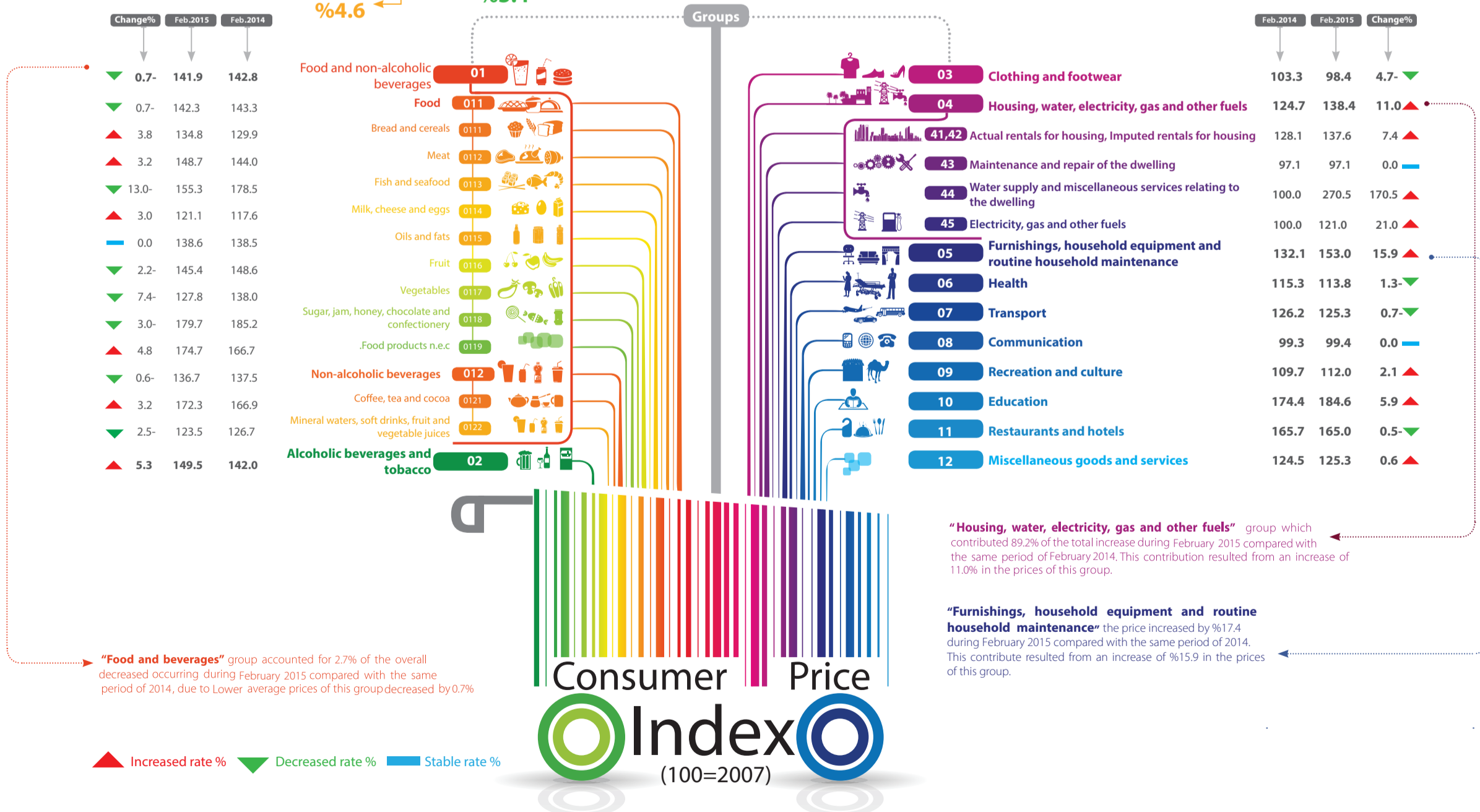
Each month, across Abu Dhabi, SCAD collects the prices of hundreds of goods and services (collectively called the 'basket'). The total cost of this basket for a given month is calculated as an index number (e.g. 123.5). This index number is called the Consumer Price Index or CPI.

Groups of Commodities & Services



Weights

Households will spend more on some expenditure groups than other groups. To represent the average spending patterns of consumers, the calculation of the CPI uses weights. That is, the goods and services in the basket are weighted according to the share they constitute of the total consumer spending. In other words, if the household spending for a given month was AED 1,000, then, on average, "Food and beverages" might represent AED 161 (or 16.1 percent), while "Housing", would represent AED 379, or 37.9 percent of total expenditure.



"Food and beverages" group accounted for 2.7% of the overall decreased occurring during February 2015 compared with the same period of 2014, due to Lower average prices of this group decreased by 0.7%

"Housing, water, electricity, gas and other fuels" group which contributed 89.2% of the total increase during February 2015 compared with the same period of February 2014. This contribution resulted from an increase of 11.0% in the prices of this group.

"Furnishings, household equipment and routine household maintenance" the price increased by 17.4 during February 2015 compared with the same period of 2014. This contribute resulted from an increase of 15.9% in the prices of this group.

Key points: The Consumer Price Index (inflation) increase by 4.6% in February 2015 compared with same month in 2014. The Consumer Price Index decreased by 0.2% in February 2015 compared with January 2015.

For More Information please Visit: www.scad.ae

