



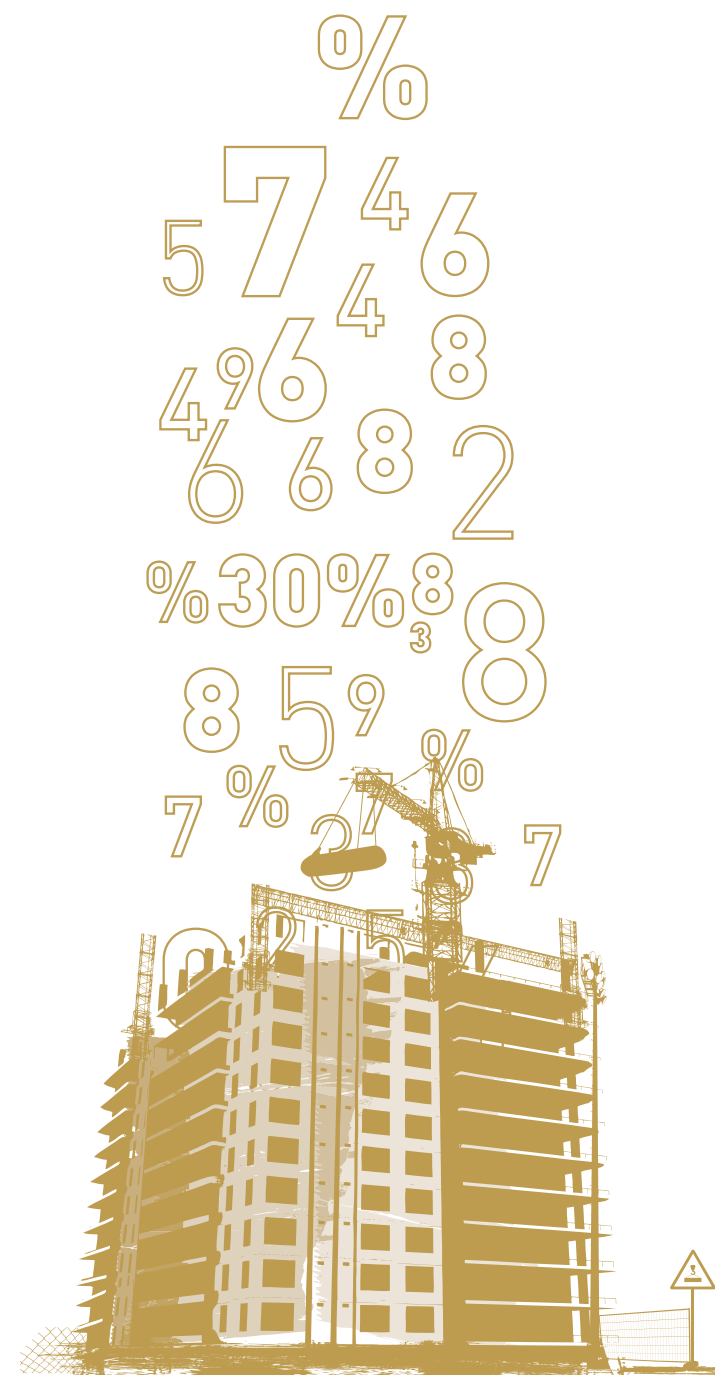
مركز الإحصاء - أبوظبي  
STATISTICS CENTER - ABU DHABI



**Annual Report on Building Materials Prices 2009**

February 2010

Foreword	
Executive Summary	8
Price Movement in 2009 as compared to 2008	9
Methodology	22
Tables	32



## Foreword

The annual report on building material prices is one of the most important reports released by the “Statistics Center – Abu Dhabi” as it helps many governmental and private entities in taking decisions, preparing analytical studies and getting to know the prevailing prices of various materials.

Due to the importance of this report, we are releasing its third issue as a stand-alone report tracking the actual movement of prices throughout the year.

On this occasion, we extend our sincere thanks to all of the entities that contributed to facilitated the task of the price collection team, hoping that the information contained in this report will prove relevant and useful. We also welcome any suggestions or notes aimed at improving this publication in the future.



Butti Ahmed Mohamed Bin Butti Al Qubaisi  
Director General

## Executive Summary

The annual report on building material prices includes an analysis of the building materials price trends during 2009, in addition to a comparison between building material prices in 2009 and 2008. The most significant results of the report are as follows:

- Cement prices fell 6.6 % below the level reached in 2008, during which they had climbed by 19.8 % compared to 2007.
- The average prices of aggregate and sand rose in 2009 by 6.7 % against their 2008 levels.
- The average prices of concrete declined by 13.5 % in 2009 as compared to 2008. Concrete prices had continued to advance since 2007, reaching their peak in the third quarter of 2008, after which they started to lose ground
- The prices of steel plummeted 43.9 % in 2009 below their levels in 2008.
- The average prices of wood edged down by 0.9 % in 2009 compared to 2008.
- The average prices of cement blocks grew by 36.1 % in 2009, compared to 2008.
- The average prices of bitumen showed a mixed trend in 2009, reflecting global oil price fluctuation.

## Price Movements in 2009 as Compared to 2008

The market prices of building materials have fluctuated a great deal lately. During the past few months, there has been a decline in the prices of several items as a result of the economic crisis that swept the world in the last quarter of 2008.

### 1. Cement

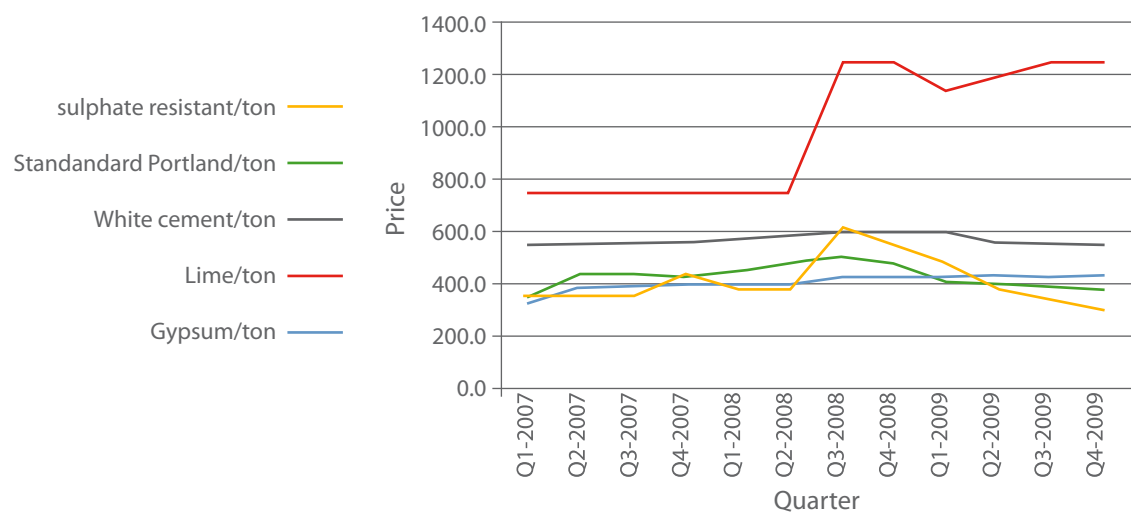
Table (1) below shows that the prices of cement fell 6.6 % from their 2008 level, reversing the trend they displayed in 2008, when they surged 19.8 % over 2007 cement prices. It can be seen from figure (1) that the cement group had exhibited a strong upward trend, reaching a peak in Q3 2008, after growing by 27.3 % from the second to the third quarter of 2008.

Starting from Q3 2008, however, cement prices began to retreat, reflecting the onset of the financial crisis, until they reached the level recorded in the last quarter of 2009.

Table (1): Average Cement Prices from 2007 to 2009

Type	2009	2008	2007	Percentage of change between 2009/2008	Percentage of change between 2008/2007
Sulphate resisting cement / Al-Ittihad / ton / UAE	378.0	490.0	389.2	-22.9	25.9
Sulphate resisting cement / Emirates / ton / UAE	377.7	-	-	-	-
Standard Portland cement / Al-Ittihad / ton / UAE	355.2	485.0	412.5	-26.8	17.6
White cement / Al-Ittihad / ton / UAE	570.1	590.0	560.5	-3.4	5.3
Lime / Oman / ton /Oman	1206.3	1050.0	750.0	14.9	40
Gypsum / Oman / ton /Oman	433.1	412.5	373.5	5	10.4

Figure (1): Average Quarterly Cement Prices from 2007 to 2009



## 2. Aggregate and Sand

Table (2) shows that the average prices of aggregate and sand rose in 2009 by 6.7 % over the level reached in 2008, during which they increased by 43.6 %, compared to 2007. This rise is attributed to the increase in the average prices of aggregate of different kinds and sizes from AED 34.6 in 2007 to AED 68.8 in 2009, marking an increase of 98.9 %.

Table (2): Average Prices of Aggregate and Sand 2007 - 2009

Type	2009	2008	2007	Percentage of change between 2009 and 2007	Percentage of change between 2008 and 2007
Aggregate / 3/4" crushed aggregate	68.8	50.5	34.6	36.2	46.0
Sand / red	34.3	36.5	-	-6.1	-
Sand / black	45.0	50	35.4	-9.9	41.2

Figure (2) shows the movements of average aggregate prices from 2008 to 2009, revealing similar patterns of change during each of the two years. The prices of aggregate in the Emirate of Abu Dhabi maintained their upward trend, unaffected by the economic crisis, due to the demand generated by the numerous road construction projects currently in progress across the Emirate.

Figure (3) depicts the movement of average sand prices from 2008 to 2009. The average price of sand fell in 2009 by 8.00 % below their 2008 levels.

Figure (2): Average Aggregate Prices 2008 - 2009

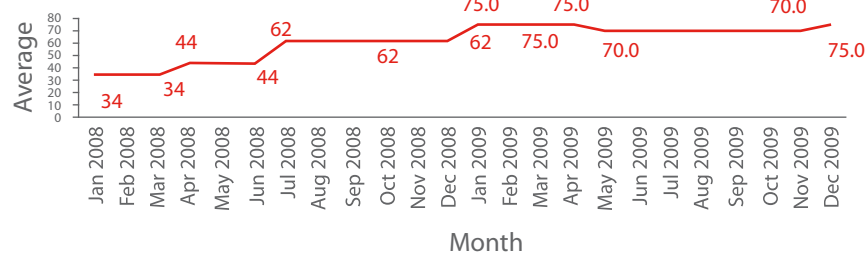
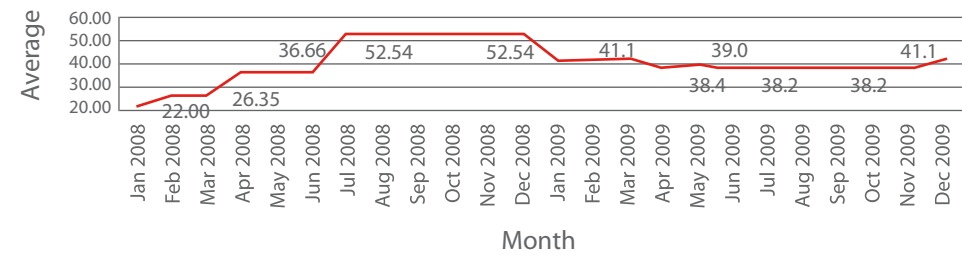


Figure (3): Average Sand Prices 2008 - 2009



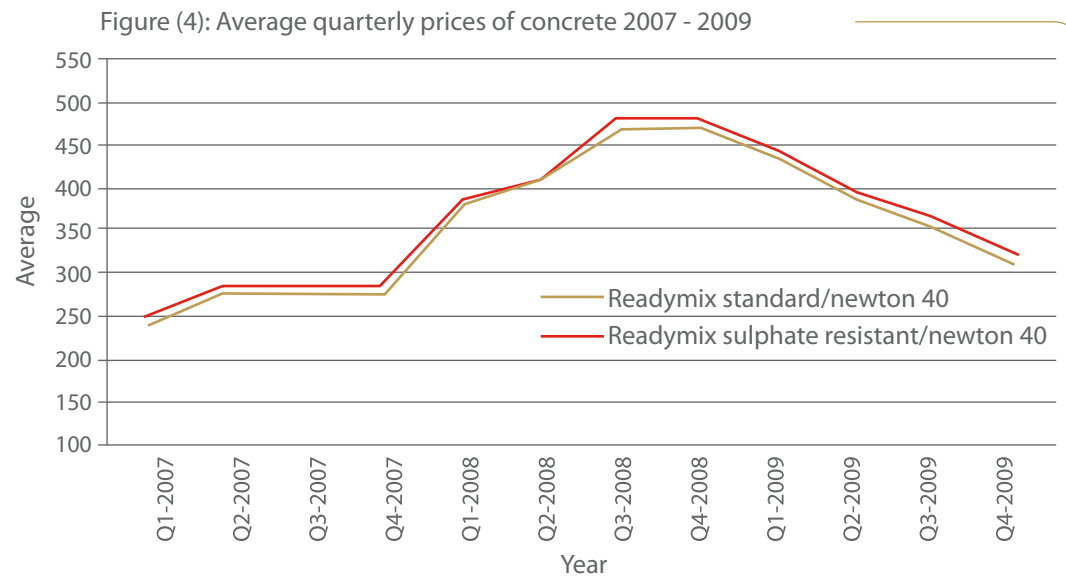
### 3. Concrete

Table (3) shows that the average price of concrete dropped 13.5 % in 2009 compared to 2008, during which it rose by 61.4 % over 2007 prices.

Table (3): Average Concrete Prices from 2007 to 2009

Type	2009	2008	2007	Percentage of change between 2009 and 2007	Percentage of change between 2009 and 2007
Ready mix concrete / normal / neutin 40 / m3 / UAE	371.8	432.1	266.9	-14.0	61.9
Ready mix concrete / sulphate resistant / neutin 40 / m3 / UAE	381.0	438.3	272.5	-13.1	60.9

Figure (4) tracks the movement of the average concrete prices from 2007 to 2009, showing a continuous rise, that reached its peak in the third quarter of 2008 and then declined again. This decline eventually brought the price back to its initial level of 2007.



## 4. Steel

Table (4) shows a decline of 43.9 % in the steel prices in 2009, as compared to 2008. High-tensile steel shrank by 50.7 %, marking the largest drop within the steel group. This echoed the decline in the average prices of Qatari, Emirate and Turkish high-tensile steel by 51.3 % - 50.2 % from AED 4,080 per ton in 2008 to AED 2,130 per ton in 2009. The next largest decline within the steel group was a 50.2 % drop in the average price of flat steel, owing to the fall in the average prices of the Emirate and Turkish flat steel fell by 52.5 % and 47.9 % respectively.

The average price of steel bars also fell by 47.8 % as the price per ton of bars declined from AED 4,000 in 2008 to AED 1,970 in 2009.

In addition, angled steel fell by 46.7 % from the level reached in 2008 as the price per ton of the Turkish, Ukrainian and Korean steel declined by 52.4 %, 46.8 % and 47.9 % respectively.

The price of beam steel fell by 34.4 % as the average price per ton of the Japanese, Ukrainian and Korean products declined by 38.8 %, 37.6 % and 26.9 % respectively.

Finally, the average price of B.R.C. Mesh fell by 38.6 %, while binding wire was the item that showed the slightest decrease (12 %) within the steel group.

Table (4): Average prices of steel 2008 - 2009

Type	2009	2008	Percentage of change between 2009/2008
Flat steel / ton / Turkey	2449.5	4704.5	-47.9
Flat steel / ton / Dubai	2460.4	5175.0	-52.5
Beam steel / large / ton / Korea	3326.6	4550.0	-26.9
Beam steel / large / ton / Japan	3199.6	5225.0	-38.8
Beam steel / large / ton / Ukraine	3287.5	5266.7	-37.6
Angled steel / ton / Korea	2511.0	4235.7	-40.7
Angled steel / ton / Ukraine	2579.2	4850.0	-46.8
Angled steel / ton / Turkey	2522.2	5300.0	-52.4
Bars / 6 - 8 mm / ton / Turkey	2086.8	3916.7	-46.7
Bars / 10 - 32 mm /ton / Qatar	2238.4	4306.8	-48.0
Bars / 10 - 32 mm /ton / AUE	2055.1	4375.0	-53.0
Bars / 10 - 32 mm / ton / Turkey	2028.0	3922.7	-48.3
High-tensile steel / ton / Qatar	2037.8	4180.2	-51.3
High-tensile steel / ton / Turkey	1914.5	3848.1	-50.2
High-tensile steel / ton / AUE	1952.0	3954.4	-50.6
B.R.C.mesh / 6 mm (142) / piece / AUE	85.0	133.3	-36.2
B.R.C. mesh / 7 mm (193) / piece / AUE	105.8	165.0	-35.9
B.R.C. mesh / 8 mm (252) / piece / AUE	128.6	228.5	-43.7
Wire / binding wire / bundle -10Kg / China	39.9	45.8	-12.9



## 5. Wood

Table (5) below shows that average wood prices edged down 0.9 % below their average levels in 2008. This reverses the upward trend in wood prices seen in 2008, during which the average price grew 6.3 % over the average that prevailed in 2007.

Table (5): Average Prices of Wood 2007 - 2009

Type	2009	2008	2007	Percentage of change between 2009/2008	Percentage of change between 2008/2007
White wood / m3 / Chile	1,018.6	1,000.4	1,091.7	1.8	-8.4
White wood / m3 / Romania	1,014.3	1,017.3	1,118.7	-0.3	-9.1
Red timber / large / Keruing / sheet / Malaysia	79.5	80.7	51.9	-1.4	55.4
Red timber / large / Merionti / sheet / Malaysia	77.3	77.5	52.3	-0.3	48.3
White Plywood / 4x8x3.6 mm / sheet / Indonesia	26.7	28.5	29.8	-6.4	-4.1
White Plywood / 4x8x4 mm / sheet / Indonesia	34.0	36.0	36.8	-5.6	-2.4
White Plywood / 4x8x9 mm / sheet / Indonesia	52.2	54.2	52.0	-3.7	4.2
White Plywood / 4x8x12 mm / sheet / Indonesia	68.1	71.1	67.8	-4.1	4.9
White Plywood / 4x8x18 mm / sheet / Indonesia	94.9	103.3	99.2	-8.2	4.2
Red Teak Faced Plywood / 3x7x3.6/ mm / sheet / Indonesia	25.9	26.1	30.4	-0.7	-14.0
Red Teak Faced Plywood / 4x8x3.6 / mm / sheet / Indonesia	42.0	37.2	41.9	12.9	-11.3
Marine Plywood, humidity resisting / 12 mm / sheet / Indonesia	97.9	92.1	84.3	6.2	9.3
Marine Plywood, humidity resisting / 18 mm / sheet / Indonesia	123.2	124.9	119.6	-1.3	4.4

## 6. Cement Blocks

Table (6) below lists the average prices of the various types of cement blocks, showing drop of 36.1 % in the price of this item during 2009, compared to 2008. Cement blocks prices had surged 17.3 % in 2008 above their levels back in 2007.

Table (6): Average Prices of Cement Blocks 2007 - 2009

Type	2009	2008	2007	Percentage of change between 2009/2008	Percentage of change between 2008/2007
Cement block / hollow / 4» 10x20x40 cm / thousand / UAE	2539.5	1976.7	1421.7	28.5	39.0
Cement block / hollow / 6» 15x20x40 cm / thousand / UAE	2994.6	2172.5	1763.3	37.8	23.2
Cement block / hollow / 8» 20x20x40 cm / thousand / UAE	3547.8	2713.4	2210.0	30.8	22.8
Cement block / solid / 4» 10x20x40 cm / thousand / AUE	3089.3	2215.0	1798.3	39.5	23.2
Cement block / solid / 6» 15x20x40 cm / thousand / AUE	4095.4	3107.5	2580.8	31.8	20.4
Cement block / solid / 8» 20x20x40 cm / thousand / AUE	4614.8	3927.5	3325.0	17.5	18.1
Hourdis, hollow / 20x20x40 cm / thousand / UAE	3699.2	2489.2	2354.2	48.6	5.7
Clay / tile / Pica / m3 / UAE	52.1	33.8	39.2	54.3	-13.8

Figure (5) shows changes in the average monthly prices for hollow cement blocks from 2008 to 2009. The upward trend was observed from the beginning of the year and continued until June 2009.

Fig (6) show changes in the average monthly prices of solid cement blocks during (2009-2008). As observed from figure, prices started to climb from early- to mid 2009, there after starting to retreat.

Figure (5): Average monthly Prices of Hollow Cement Blocks 2008 - 2009

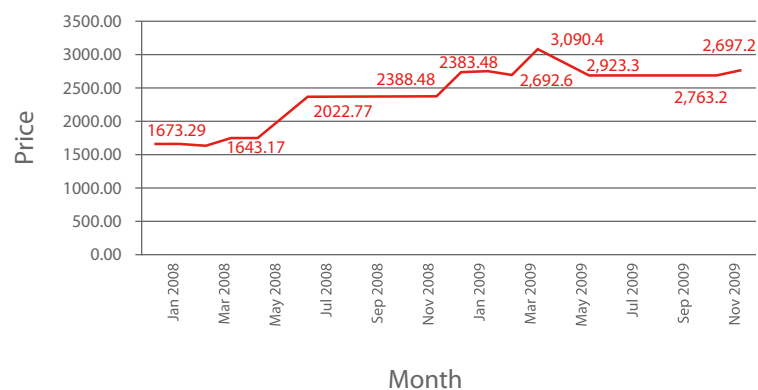
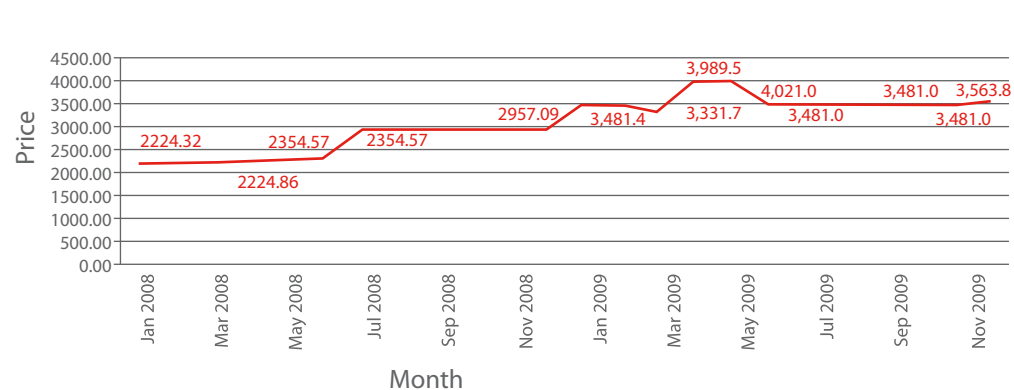


Figure (6): Average monthly Prices of Solid Cement Blocks in 2009



## 7. Bitumen

Figure (7) lays out monthly bitumen prices for 2009. Bitumen prices are known to be influenced by global oil prices. A rise in oil price would therefore result in a corresponding surge in the price of bitumen

Figure (7.1): Average Monthly crude oil prices during 2009

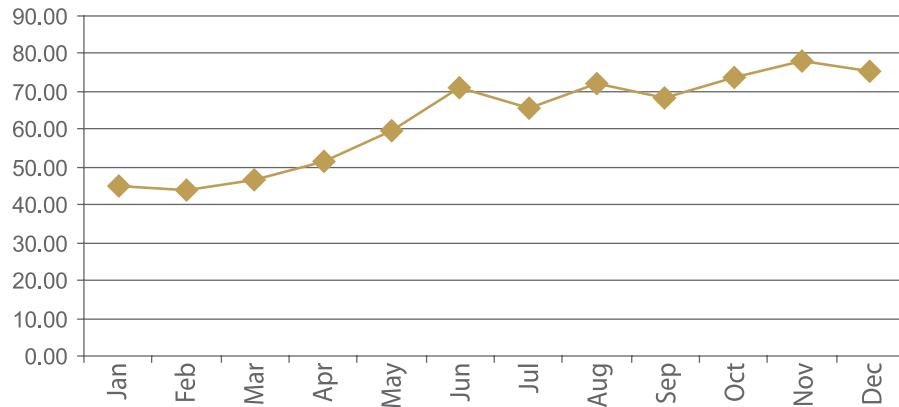


Figure (7.2): Average Monthly Prices of Bitumen in 2009

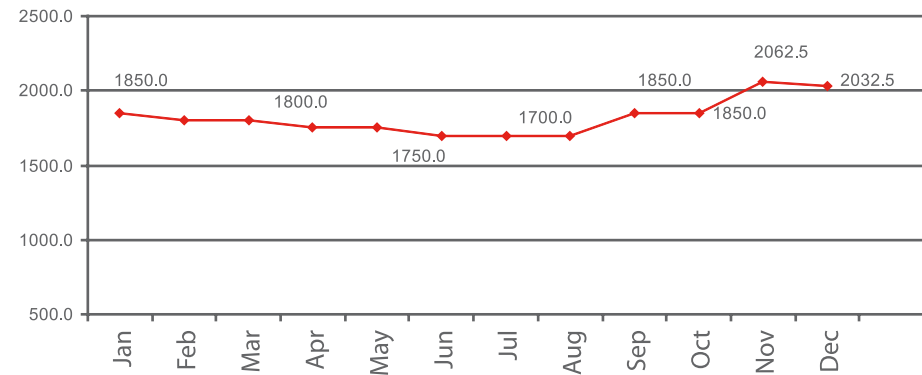


Table (8) shows that the average prices of waterproofing membrane rolls rose by 29.0 % in 2009 as compared to 2008. In 2008 the rise was 6.0 % in excess of the average price in 2007.

Table (8): Average Prices of Membrane Rolls 2007 - 2009

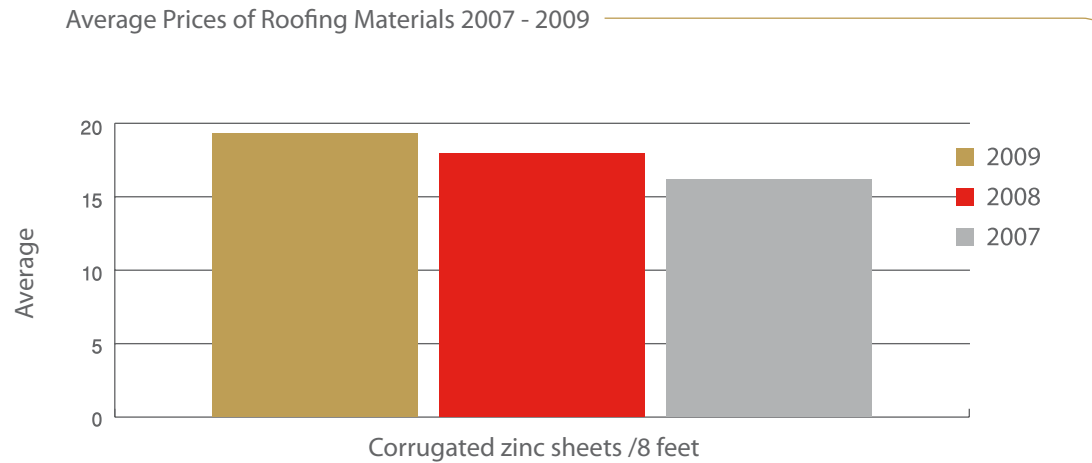
Type	2009	2008	2007	Percentage of change between 2009/2008	Percentage of change between 2008/2007
Membrane rolls / ekamat / 400 / m2 / Saudi Arabia	12.2	9.0	8.9	35.8	1.6
Membrane rolls / ekamat / double 400 / m2 / Saudi Arabia	13.5	11.0	10.0	22.3	10.4

## 8. Roofing Materials

Table (9) shows that the average prices of roofing materials grew by 7.8 % in 2009 compared to 2008. This falls below the percentage rise recorded in 2008, which was 11.3 % above 2007 prices.

Table (9): Average Prices of Roofing Materials 2007 - 2009

Type	2009	2008	2007	Percentage of change between 2009/2008	Percentage of change between 2008/2007
Zinc sheet / corrugated, 8 feet / light	19.4	18.0	16.2	7.8	11.3



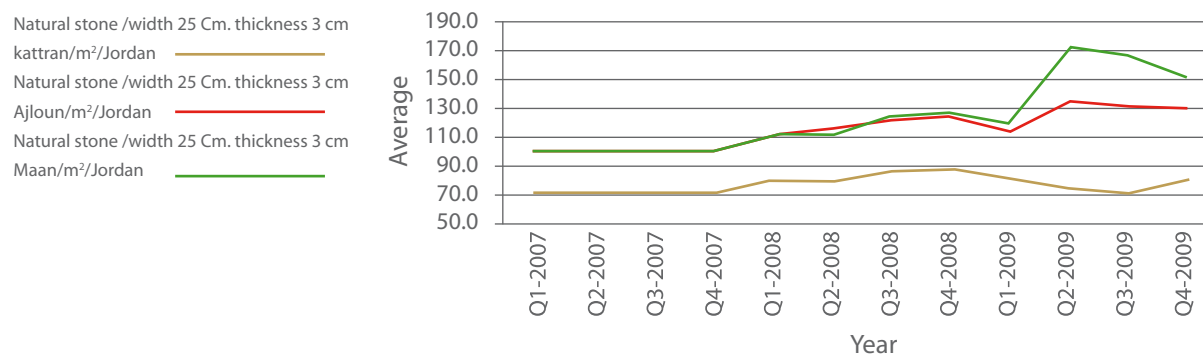
## 9. Natural Stone

Table (10) shows that the average prices of natural stone rose by 9.4 % in 2009 as compared to 2008, during which the price rose by 18.8 % above the 2007 figures.

Table (10): Average Prices of Natural Stone 2007 - 2009

Materials	2009	2008	2007	Percentage of change between 2009/2008	Percentage of change between 2008/2007
Natural stone / width 25 cm, thickness 3 cm / Kattran / m2 / Jordan	77.1	83.8	70.0	-8.0	19.6
Natural stone / width 25 cm, thickness 3 cm / Agloon / m2 / Jordan	127.7	118.3	100.0	7.9	18.3
Natural stone / width 25 cm, thickness 3 cm / Maan / m2 / Jordan	151.8	118.3	100.0	28.3	18.3

Average Quarterly Prices of Natural Stone 2007 - 2009



## 10. Tiles and Marble

Table (11) shows that the average prices of tiles and marble fell by 5.8 % in 2009 as compared to 2008. This category recorded a significant rise of 24.6 % in 2008 compared to 2007. Figure (9) shows the percentages of change in the subgroups of the tiles and marble category, with the average price of ceramic tiles for walls of all kinds falling by 15.2 % in 2009 as compared to 2008 the next largest fall was 12.6 % in porcelain tiles, followed by a drop of 7.9 % in the ceramic tiles for floor.

The figure also shows the percentages change in the subgroups of the tiles and marble category from 2007 to 2008, revealing a rise in the average prices of ceramic tiles for walls of all kinds rose by 45.6 % and by 34.4 % in terrazzo tiles, followed by a rise of 31.1 % in porcelain tiles.

Figure (9): Percentage Change in the Average Prices of Tiles and Marble from 2007 to 2009

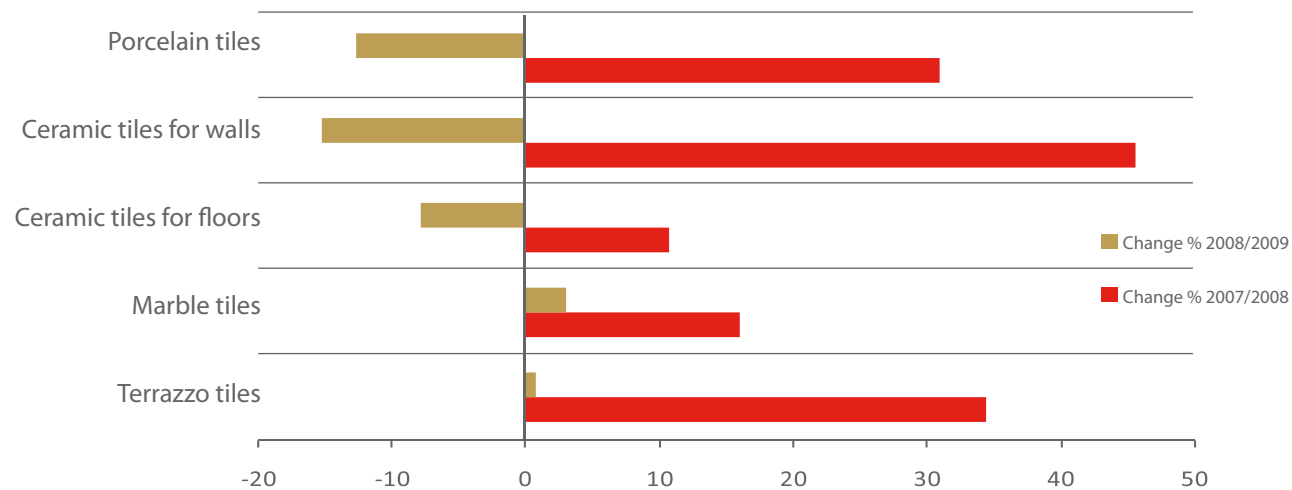


Table (11): Average Prices of Tiles and Marble 2007 - 2009

Materials	2009	2008	2007	Percentage of change between 2009/2008	Percentage of change between 2008/2007
Terrazzo tiles / 30x30 cm / m2 / AUE	25.4	25.9	19.1	-1.8	35.7
Terrazzo tiles / 25x25 cm / m2 / AUE	25.7	24.8	18.6	3.4	33.2
Marble tiles / carrara 30x60x2 cm /m2 / Italy	144.8	152.7	115.2	-5.2	32.5
Marble tiles / white 40x40x2 cm / Bynco B / m2 / Italy	467.6	446.3	426.5	4.8	4.6
Marble tiles / Traventino 40x40x2 cm / Beige / m2 / Italy	267.9	248.8	197.5	7.7	25.9
Marble tiles / Arabskato 40x40x2 cm / m2 / Italy	401.1	367.5	306.0	9.1	20.1
Garanite, Labrador / 60x30x2 cm / m2 / Italy	485.3	461.5	393.3	5.2	17.3
Marble tiles, Perlato / Royal 30x60x2 cm /m2 / Italy	173.9	173.0	176.0	0.5	-1.7
Marble tiles, Perlato / Cecelia 30x60x2 cm /m2 / Italy	145.2	146.7	129.6	-1.0	13.2
Ceramic tiles for floor / 20x20 / m2 / Al fujaira	24.3	21.9	19.9	10.7	10.0
Ceramic tiles for floor / 20x20 / m2 / Ras Al kaima	22.5	20.4	19.0	10.3	7.7
Ceramic tiles for floor / 20x20 / m2 / Spain	46.1	60.7	51.0	-24.0	19.0
Ceramic tiles for floor / 20x20 / m2 / Italy	49.8	66.2	59.0	-24.7	12.2
Ceramic tiles for floor, granneti / 109+20+10+7 / m2 / Ras Al kaima	52.2	58.9	56.0	-11.5	5.1
Ceramic tiles for walls / 40x25 / m2 / Ras Al kaima	25.1	22.0	19.4	13.8	13.5
Ceramic tiles for walls, granneti / 20x20 cm / m2 / Ras Al kaima	23.1	36.0	22.2	-35.9	62.5
Ceramic tiles for walls, granneti / 30x30 cm / m2 / Ras Al kaima	39.3	45.8	30.7	-14.1	49.1
Ceramic tiles for walls, granneti / 40x40 cm / m2 / Ras Al kaima	39.2	52.2	33.2	-24.8	57.2
Porcelain tiles, white / 30x20 cm / m2 / Al fujaira	23.5	19.4	20.1	21.1	-3.5
Porcelain tiles, white / 30x20 cm / m2 / Spain	44.9	67.1	47.9	-33.0	40.0
Porcelain tiles, colored / 10x10 cm / m2 / Spain	66.0	90.9	65.0	-27.4	39.8
Porcelain tiles, colored / 20x25 cm / m2 / Spain	65.9	74.2	50.1	-11.2	48.0

Figure (12) shows that the average prices of sanitaryware fell in 2009 by 9.9 % from the level reached in 2008, when they increased by 8.7 % as compared to 2007. This decline is attributed to a fall of 8.2 % in the prices of sanitaryware without accessories, while the prices of sanitaryware with all accessories declined by 14.8 %.

## 11. Sanitaryware

Table (12): Average Prices of Sanitaryware 2007 - 2009

Type	2009	2008	2007	Percentage of change between 2009/2008	Percentage of change between 2008/2007
Complete bathroom sets without accessories / white / Brian / UAE	848.0	895.5	835.0	-5.3	7.2
Complete bathroom sets without accessories / white / Brian / UAE	1309.5	1527.3	1589.2	-14.3	-3.9
Complete bathroom sets without accessories / white / Star / UAE	1878.9	1856.5	1914.2	1.2	-3.0
Complete and colored bathroom set / colored / Liwa / UAE	865.8	925.4	850.0	-6.4	8.9
Complete and colored bathroom set / colored / Flora / UAE	783.9	862.1	816.3	-9.1	5.6
Complete and colored bathroom set / colored / Venice / UAE	1418.9	1677.9	1635.0	-15.4	2.6
Complete and colored bathroom set with all accessories / colored / Globo / UAE	3568.2	4928.3	4266.7	-27.6	15.5
Complete and colored bathroom set / colored / Ideal Standard / UAE	17666.7	18041.7	13166.7	-2.1	37.0

## 12. Glass:

Figure (10) shows the movement of the glass prices in 2009, which fell in March and rose again in October 2010. Table (13) shows that the average price of glass rose by 0.49 % over the level it reached in 2008.

Table (13): Average Prices of Glass 2008 - 2009

Type	2009	2008	Percentage of change between 2009/2008
Transparent glass / 4 mm / m2 / Saudi Arabia	33.3	44.7	-25.3731
Transparent glass / 6 mm / m2 / Saudi Arabia	47.3	43.2	9.65251
Tinted glass / 6 mm / m2 / Saudi Arabia	71.7	68.3	4.878049
Mirror glass / 4 mm / m2 / Saudi Arabia	60.8	59.3	2.52809
Mirror glass / 6 mm / m2 / Saudi Arabia	78.9	71.3	10.76023

Figure (10): Average Prices of Glass in 2009

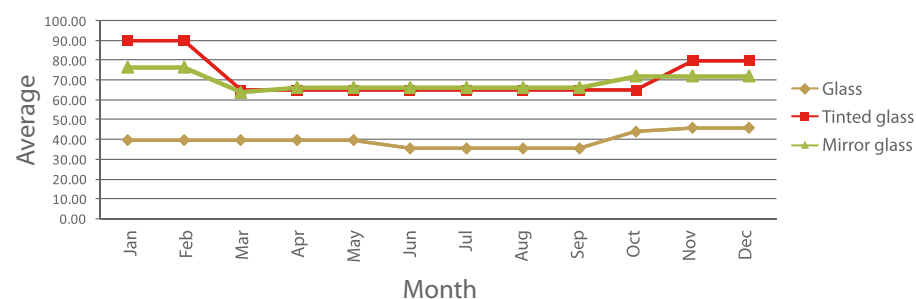


Figure (14) shows that the prices of different types and sizes of PVC pipes fell 25 % below the level reached in 2008, which had seen the prices of PVC pipes surge by 16.9 % over the level they reached in 2007.



### 13. PVC Pipes

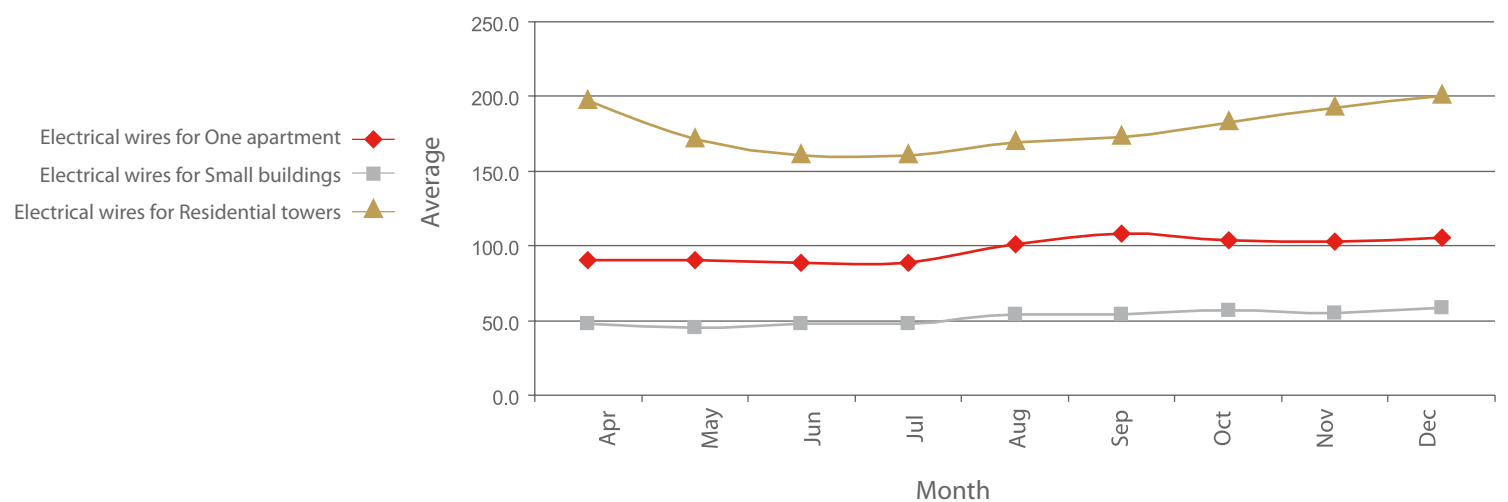
Table (14): Average Prices of PVC Pipes 2008 - 2009

Type	2009	2008	2007	Percentage of change between 2009/2008	Percentage of change between 2008/2007
Plastic pipe/ 1/2»/ 6 m/ U A E	9.7	15.3	12.0	-36.5	27.1
Plastic pipe/ 4/3»/ 6 m/ U A E	13.0	19.1	15.5	-32.2	23.4
Plastic pipe/ 1»/ 6 m/ U A E	17.4	29.0	24.3	-39.9	19.4
Plastic pipe/ 1.5»/ 6 m/ U A E	37.1	47.1	45.4	-21.2	3.8
Plastic pipe/ 2»/ 6 m/ U A E	60.0	63.7	52.3	-5.7	21.8
Plastic pipe/ 2.5»/ 6 m/ U A E	79.4	91.8	83.8	-13.5	9.4
Plastic pipe/ 3»/ 6 m/ U A E	109.0	147.5	130.3	-26.1	13.2

Figure (11) shows the movement of electrical wire prices from April to December 2009. The figure also shows that the prices fell and bounced back during the seven months of 2009 depicted in the chart.

### 14. Electrical Wires

Figure (11): Average Prices of Electrical Wires in 2009



## Methodology

Prices are highly significant economic indicators for the process of planning and research in various fields. Statistical bodies in different countries attach particular importance to the question of accessibility to data on the prices of building materials used by large numbers of people and corporations. Therefore, Statistics Center – Abu Dhabi has continued the practice of collecting data on the prices of those materials regularly.

Statistics Center – Abu Dhabi is working towards creating a general index for the prices of building materials (construction sector), comparable to the consumer price index published by the Center on a monthly basis and put within the access of all segments of society. This is SCAD's first annual report on building materials. It reviews the overall movements in the average prices of some of the main construction materials and thus covers the key indicators of the construction industry in the Emirate of Abu Dhabi during 2009. The report aims to acquaint data users and the general public with the movement of prices in 2009 as compared to 2008 so that project owners can be fully aware of the price trends of building materials during the past two years.

The report tracks price changes in the main categories of construction materials, namely cement, aggregate and sand, wood, steel, concrete and cement blocks. There are other categories of construction materials, but are of less importance than the main categories.

The report will help the owners of projects in making relevant cost estimates and will contribute to studies exploring the implications of the financial crisis for the building materials market.

### A. Geographical Coverage

The current geographical coverage of SCAD's methodology is to collect prices from the cities of Abu Dhabi and Al Ain and does not include other geographical divisions. It is certainly important to comprehensively cover all areas of the Emirate, a matter which requires arduous efforts in order to periodically collect prices from all areas of the Emirate. In this regard, the Center is in the process of expanding the scope of geographical coverage to include all areas of the Emirate.

### B. Sources of Commodities and Services

The price collection sources were determined through field visits paid by a team from the Price Indices Section. These sources are regularly updated. So, in the event that any source is closed or moved, the team will inform the section of same. Prices are collected from the 32 sources.

### C. Price Collection

Being one of the most crucial stages, the price collection stage requires a great deal of effort to ensure accuracy. Therefore, a team has been carefully selected to carry out this stage. Prior to field deployment for collection of prices, the team members had been trained, and acquainted with the main categories and sub-categories of building materials, and their specifications.

Prices are collected through field visits to the sources where the persons in charge had been given a complete briefing about the aims of collecting prices and the reasons for being chosen to be part of the sources' list.

### Building Materials Basket

The building materials index basket consists of 166 items, categorized into 18 groups that represent the main products used in the construction activity. The groups are listed below:

No.	Group
1	Cement
2	Aggregates & Sand
3	Concrete
4	Steel
5	Wood
6	Blook
7	Roofing Materials
8	Waterproofing Products
9	Waterproofing Bituminous Membrane

No.	Group
10	Natural Stone
11	Tiles and Marble
12	Sanitary Ware
13	False ceiling
14	Paints
15	Glass
16	Water And Sewage Pipes
17	Wires
18	Diesel

#### D. Validation of price data

The process of checking prices is carried out in two stages, in the first of which data entry is checked. In the second stage, a comparison is made between the prices of the current month and the previous month and consistency in the prices of materials collected from various sources is checked, in order to avoid data entry errors and any other errors that may have occurred during the collection and tabulation of prices. After prices are entered and checked, average material prices are calculated, first on a monthly and then on an annual basis.

#### E. Publication

Data on the annual prices of building materials is published at the beginning of the fourth month of each year. Such data is made available in the form of a booklet and can be provided to users in Excel format via e-mail or on CDs. It is worth mentioning that this report will be distributed free of charge to those interested in its content. Recognizing the importance of prices for a large segment of economists, decision makers and contractors in various fields, SCAD will continue to release this report on a monthly, quarterly and annual basis.



## Tables

Price in Dhs Commodity	السعر بالدرهم												التسلسل Serial No.	
	متوسط ديسمبر Dec. Ave.	متوسط نوفمبر Nov.Ave	متوسط أكتوبر Oct.Ave	متوسط سبتمبر Sep.Ave	متوسط أغسطس Aug.Ave	متوسط يوليو Jul.Ave	متوسط يونيو Jun.Ave.	متوسط مايو May Ave.	متوسط أبريل Apr.Ave.	متوسط مارس Mar .Ave.	متوسط فبراير Feb. Ave.	متوسط يناير Jan. Ave.		المواد
Wires Apartments													الاسلاك للشقة	
Electrical wire / Sinjil CORPS / 1.5 m.m lap / Ducab /U.A.E.	55.0	54.5	52.2	55.8	51.8	50.2	50.2	50.5	51.3	-	-	-	اسلاك كهربائية /سنجل كور/ 1.5 ملم لفة/ دوكاب/ الامارات	143
Electrical wire / Sinjil CORPS / 2.5 m.m lap / Ducab /U.A.E.	85.0	83.5	83.7	87.3	83.8	70.0	70.0	72.8	70.9	-	-	-	اسلاك كهربائية /سنجل كور/ 2.5 ملم لفة/ دوكاب/ الامارات	144
Electrical wire / Sinjil CORPS / 4 m.m lap / Ducab /U.A.E.	135.0	131.0	133.2	137.2	128.9	110.0	110.0	110.0	110.9	-	-	-	اسلاك كهربائية /سنجل كور/ 4ملم لفة/دوكاب/ الامارات	145
Electrical wire / Sinjil CORPS / 6 m.m lap / Ducab /U.A.E.	195.0	190.0	195.8	203.3	189.0	159.9	159.9	164.0	166.0	-	-	-	اسلاك كهربائية /سنجل كور/ 6ملم لفة/دوكاب/ الامارات	146
Small Building													للمبنى	
Electrical wire / 4-Cours / 10 m / Ducab /U.A.E.	26.0	26.0	26.8	25.3	28.0	24.1	24.1	23.8	22.1	-	-	-	اسلاك كهربائية / 4 كور / 10متر/ دوكاب/ الامارات	147
Electrical wire / 4-Cours / 16 m / Ducab /U.A.E.	35.3	34.0	34.5	33.4	37.3	32.3	32.3	32.5	29.0	-	-	-	اسلاك كهربائية / 4 كور / 16متر/ دوكاب/ الامارات	148
Electrical wire / 4-Cours / 25 m / Ducab /U.A.E.	53.8	48.5	48.9	48.5	50.6	44.1	44.1	44.5	39.3	-	-	-	اسلاك كهربائية / 4 كور / 25متر/ دوكاب/ الامارات	149
Electrical wire / 4-Cours / 35 m / Ducab /U.A.E.	65.0	61.0	61.8	60.7	62.5	54.1	54.1	54.0	51.9	-	-	-	اسلاك كهربائية / 4 كور / 35متر/ دوكاب/ الامارات	150
Electrical wire / 4-Cours / 50 m / Ducab /U.A.E.	78.3	72.5	72.4	71.7	74.6	63.8	63.8	65.3	65.3	-	-	-	اسلاك كهربائية / 4 كور / 50متر/ دوكاب/ الامارات	151
Electrical wire / 4-Cours / 70 m / Ducab /U.A.E.	117.3	106.0	108.3	100.0	95.0	91.6	91.6	90.0	87.5	-	-	-	اسلاك كهربائية / 4 كور / 70متر/ دوكاب/ الامارات	152
Electrical wire / 4-Cours / 18 m.m / Oman	29.0	27.5	27.5	26.0	26.0	23.0	23.0	22.0	23.0	-	-	-	اسلاك كهربائية / 4 كور / 18ملم/ عمان	153
Electrical wire / 4 Corps / m.m to 25 / Oman	39.3	37.5	38.5	37.0	36.0	33.0	33.0	16.0	34.5	-	-	-	اسلاك كهربائية / 4 كور / 25ملم/ عمان	154
Electrical wire / 4-Cours / 36 m.m / Oman	49.3	48.0	52.0	48.0	46.8	43.5	43.5	42.0	44.5	-	-	-	اسلاك كهربائية / 4 كور / 36ملم/ عمان	155
Electrical wire / 4-Cours / 42 m.m / Oman	73.3	67.5	76.5	68.0	61.5	55.5	55.5	55.0	58.0	-	-	-	اسلاك كهربائية / 4 كور / 42ملم/ عمان	156
Electrical wire / 4-Cours / 60 m.m / Oman	95.7	88.5	90.0	82.0	80.3	76.0	76.0	75.0	77.8	-	-	-	اسلاك كهربائية / 4 كور / 60ملم/ عمان	157
Electrical wire / 4-Cours / 77 m.m / Oman	134.0	122.5	136.5	128.0	112.3	103.5	103.5	105.0	132.5	-	-	-	اسلاك كهربائية / 4 كور / 77ملم/ عمان	158
Residential Towers													الابرار السكنية	
Electrical wire / 4 Corps / 120 m.m / Oman	169.0	160.0	140.0	135.0	131.5	131.5	131.5	138.0	142.5	-	-	-	اسلاك كهربائية / 4 كور / 120ملم/ عمان	159
Electrical wire / 4-Cours / 95 m.m / Oman	130.7	125.0	122.5	116.0	114.3	102.0	102.0	132.0	132.5	-	-	-	اسلاك كهربائية / 4 كور / 95ملم/ عمان	160
Electrical wire / 4 Corps / 150 m.m / Oman	199.0	193.5	195.0	180.0	178.3	165.0	165.0	165.0	196.3	-	-	-	اسلاك كهربائية / 4 كور / 150ملم/ عمان	161
Electrical wire / 4 Corps / 185 m.m / Oman	231.0	227.5	225.0	210.0	203.5	190.0	190.0	190.0	255.0	-	-	-	اسلاك كهربائية / 4 كور / 185ملم/ عمان	162
Electrical wire / 4 Corps / 240 m.m / Oman	316.7	297.5	270.0	260.0	258.8	255.0	255.0	255.0	315.0	-	-	-	اسلاك كهربائية / 4 كور / 240ملم/ عمان	163
Diesel													الديزل	
Diesel/ ADNOC / Gallon	8.6	8.6	8.6	8.6	8.6	8.6	8.6	8.6	8.6	8.6	8.6	8.6	الديزل / ادنوك / جالون	164

Price in Dhs Commodity	السعر بالدرهم												التسلسل Serial No.	
	متوسط ديسمبر Dec. Ave.	متوسط نوفمبر Nov.Ave	متوسط أكتوبر Oct.Ave	متوسط سبتمبر Sep.Ave	متوسط أغسطس Aug.Ave	متوسط يوليو Jul.Ave	متوسط يونيو Jun.Ave.	متوسط مايو May Ave.	متوسط أبريل Apr.Ave.	متوسط مارس Mar .Ave.	متوسط فبراير Feb. Ave.	متوسط يناير Jan. Ave.		المواد
Paints													الاصباغ	
Paints / Jollofex normal emition / dram/ U.A.E.	60.0	60.0	55.0	55.0	60.0	60.0	60.0	58.3	57.5	60.0	60.0	59.0	صبغ أمليشن / جوليغفكس عادي / درام / الإمارات	124
Paints / Durosan matt emition /Gallon /U.A.E.	60.0	60.0	55.0	55.0	55.0	55.0	55.0	60.0	65.0	55.0	55.0	55.0	صبغ أمليشن / ديروسان متوسط / جالون / الإمارات	125
Mamorex Paint / Fenomastic plastic emition / Gallon /U.A.E.	85.0	85.0	95.0	95.0	85.0	85.0	85.0	85.0	85.0	85.0	85.0	85.0	صبغ أمليشن / فينوماستيك ممتاز / جالون / الإمارات	126
Mamorex Paint / Bangalac glos /Gallon /U.A.E.	60.0	50.0	65.0	65.0	65.0	65.0	65.0	57.5	60.0	55.0	65.0	65.0	صبغ زيتي / بنجالاك قلوب (لميع - مطفي) / جالون / الإمارات	127
Mamorex Paint / Heavy tex with arbl / dram/ U.A.E.	185.0	202.5	175.0	175.0	177.5	177.5	177.5	177.5	177.5	170.0	185.0	190.0	صبغ زيتي / صبغ مارموركس خشن جوتن / درام/ الإمارات	128
Mamorex Paint / Heavy tex w/o marbl clips / dram / U.A.E.	200.0	200.0	200.0	200.0	-	172.5	172.5	172.5	172.5	170.0	210.0	190.0	صبغ زيتي / صبغ مارموركس ناعم / درام/ الإمارات	129
Glass													الزجاج	
Glass / 4 m.m / m2 / S.Arbain	35.0	35.0	35.0	30.0	30.0	30.0	30.0	35.0	35.0	35.0	35.0	35.0	زجاج شفاف / 4 ملم / 2م / السعودية	130
Tinted Glass / 6m.m / m2 / S.Arbain	60.0	60.0	55.0	42.0	42.0	42.0	42.0	45.0	45.0	45.0	45.0	45.0	زجاج شفاف / 6 ملم / 2م / السعودية	131
Tinted Glass / 4m.m / m2 / S.Arbain	-	-	-	-	-	-	-	60.0	60.0	60.0	85.0	85.0	زجاج ملون / 4 ملم / 2م / السعودية	132
Tinted Glass / 6m.m / m2 / S.Arbain	80.0	80.0	65.0	65.0	65.0	65.0	65.0	65.0	65.0	65.0	90.0	90.0	زجاج ملون / 6 ملم / 2م / السعودية	133
Mirror Glass / 4 m.m / m2 / S.Arbain	65.0	65.0	65.0	57.5	57.5	57.5	57.5	57.5	57.5	60.0	65.0	65.0	زجاج مرايا / 4 ملم / 2م / السعودية	134
Mirror Glass / 6 m.m / m2 / S.Arbain	80.0	80.0	80.0	76.5	76.5	76.5	76.5	76.5	76.5	68.0	90.0	90.0	زجاج مرايا / 6 ملم / 2م / السعودية	135
Water And Sewage Pipes													الانابيب	
PVC Pipes / 1/2» / 6m /U.A.E.	9.6	9.6	9.6	8.9	8.9	8.9	8.9	8.9	8.9	9.0	12.5	12.5	أنبوب بلاستيك / 1/2 انش / ستة امتار /الامارات	136
PVC Pipes / 3/4» / 6m /U.A.E.	13.5	13.5	13.5	12.2	12.2	12.2	12.2	12.2	12.2	12.0	15.0	15.0	أنبوب بلاستيك / 3/4 انش / ستة امتار /الامارات	137
PVC Pipes / 1» / 6m /U.A.E.	18.9	18.9	18.9	16.8	16.8	16.8	16.8	16.8	16.8	15.5	18.0	18.0	أنبوب بلاستيك / 1 انش / ستة امتار /الامارات	138
PVC Pipes / 1,5 « / 6m /U.A.E.	37.5	37.5	37.5	36.2	36.2	36.2	36.2	36.2	36.2	36.0	40.0	40.0	أنبوب بلاستيك / 1.5 انش / ستة امتار /الامارات	139
PVC Pipes / 2 « / 6m /U.A.E.	64.8	64.8	64.8	55.3	55.3	55.3	55.3	55.3	55.3	54.0	70.0	70.0	أنبوب بلاستيك / 2 انش / ستة امتار /الامارات	140
PVC Pipes / 2,5 « / 6m /U.A.E.	86.4	86.4	86.4	75.7	75.7	75.7	75.7	75.7	75.7	75.0	82.0	82.0	أنبوب بلاستيك / 2.5 انش / ستة امتار /الامارات	141
PVC Pipes / 3 « / 6m /U.A.E.	120.0	120.0	120.9	102.0	102.0	102.0	102.0	102.0	102.0	95.0	120.0	120.0	أنبوب بلاستيك / 3 انش / ستة امتار /الامارات	142

Commodity	السعر بالدرهم												التسلسل Serial No.	
	متوسط ديسمبر Dec. Ave.	متوسط نوفمبر Nov.Ave	متوسط أكتوبر Oct.Ave	متوسط سبتمبر Sep.Ave	متوسط أغسطس Aug.Ave	متوسط يوليو Jul.Ave	متوسط يونيو Jun.Ave.	متوسط مايو May Ave.	متوسط أبريل Apr.Ave.	متوسط مارس Mar .Ave.	متوسط فبراير Feb. Ave.	متوسط يناير Jan. Ave.		المواد
Bathroom Coloured Set/Liwa / Set/ Ras Al kaima	783.0	850.0	851.7	950.0	870.0	870.0	870.0	870.0	870.0	850.0	855.0	900.0	أطقم حمام كاملة بدون اللوازم/ ملون / ليوا / طقم/ راس الضيعة	106
Bathroom Coloured Set / Flora / Set / Ras Al kaima	638.0	-	765.0	810.0	810.0	810.0	810.0	810.0	810.0	780.0	780.0	800.0	أطقم حمام كاملة بدون اللوازم/ ملون / فلورا / طقم/ راس الضيعة	107
Bathroom Coloured Set / Venees / Set / Ras Al kaima	-	-	1,431.0	1,331.0	1,500.0	1,331.0	1,331.0	1,432.5	1,432.5	1,465.0	1,465.0	1,470.0	أطقم حمام كاملة بدون اللوازم ملون / فينيس / طقم/ راس الضيعة	108
Bathrom Set with Accessories													أطقم حمام كامل بجميع اللوازم ملون	
Bathroom Coloured Set / Globo/ Set / Italy	3,100.0	3,100.0	3,100.0	3,100.0	3,600.0	3,400.0	3,400.0	3,400.0	3,400.0	-	4,850.0	4,800.0	طقم حمام كامل بجميع اللوازم ملون / جلوبو / طقم/ ايطاليا	109
Bathroom Coloured Set / Ideal Standred / Set / Italy	18,000.0	18,000.0	18,000.0	18,000.0	18,000.0	18,000.0	18,000.0	18,000.0	18,000.0	16,000.0	16,000.0	18,000.0	طقم حمام كامل بجميع اللوازم ملون / ايديال ستاندرد / طقم/ ايطاليا	110
Sink Stainless Steel With Mixer-Single													مجلى ستلسستيل كامل مع الخلاط	
Single Drainer& bowl / «Bland» - 100x60 cm / Set / UK	320.0	320.0	-	-	325.0	-	342.5	-	450.0	650.0	650.0	650.0	حوض ورف / 60*100 سم / طقم / إنجلترا	110
Single Bowl& Double Drainer / «Bland» - 150x50 cm / Set / UK	550.0	550.0	550.0	-	450.0	-	635.0	-	475.0	700.0	700.0	700.0	حوض ورفين / 50*150 سم / طقم / إنجلترا	111
Double Bowl&Double Drainer / «Bland» - 200x60 cm / Set / UK	-	-	750.0	-	-	-	-	-	-	900.0	800.0	800.0	حوض ورفين / 60*200 سم / طقم / إنجلترا	112
Water Heater (12) Gallons / Chaffotean / Set / S .Arabia	260.0	260.0	265.0	265.0	282.5	325.0	325.0	265.0	265.0	265.0	265.0	265.0	سخان مياه (12) جالون / شافتو / عمودى / طقم/ السعودية	113
Water Heater (16) Gallons / Chaffotean / Set / S .Arabia	300.0	300.0	352.5	352.5	322.5	352.5	352.5	305.0	305.0	305.0	305.0	305.0	سخان مياه (16) جالون / شافتو / عمودى / طقم/ السعودية	114
Water Tank Fiberglass / 2000 Gallons / Set/ U.A.E.	-	-	2,950.0	2,950.0	2,950.0	2,950.0	2,950.0	3,145.0	3,100.0	3,200.0	2,800.0	3,100.0	تنك فايبر جلاس / 2000 جالون / الإمارات	115
Water Tank Fiberglass / 1000 Gallons / Set/ U.A.E.	2,000.0	2,000.0	1,550.0	1,550.0	1,550.0	1,550.0	1,550.0	1,550.0	1,550.0	1,800.0	1,450.0	1,550.0	تنك فايبر جلاس / 1000 جالون / الإمارات	116
Water Tank Fiberglass / 1500 Gallons / Set/ U.A.E.	3,000.0	3,000.0	2,212.5	2,212.5	2,210.0	2,212.5	2,212.5	2,250.0	2,225.0	2,500.0	-	-	تنك فايبر جلاس / 1500 جالون / الإمارات	117
False ceiling													الاسقف المستعارة	
Fales Ceiling / Alumin Luxalon / m2 / U.A.E.	110.0	120.0	120.0	120.0	125.0	-	120.0	105.0	105.0	120.0	125.0	120.0	سقف مستعار / المونيوم لوكسالون سادة / 2م / الإمارات	118
Fales Ceiling / Gypsum Ceiling(9.5 m.m) / m2 / U.A.E.	60.0	65.0	65.0	65.0	55.0	50.0	50.0	50.0	50.0	60.0	60.0	60.0	سقف مستعار / جبس املس 9.5 ملم / 2م / الإمارات	119
Fales Ceiling / Gypsum Printing / m2 / U.A.E.	65.0	70.0	60.0	60.0	65.0	65.0	65.0	55.0	55.0	60.0	75.0	75.0	سقف مستعار / جبس مزخرف جي ار حي / 2م / الإمارات	120
Fales Ceiling / CelotexCeiling 60x60 cm- 15 m.m / m2 / S.Arbain	100.0	105.0	110.0	110.0	65.0	60.0	-	-	-	60.0	75.0	60.0	سقف مستعار / سيلوتكس 60*60 سم 15 ملم / 2م / السعودية	121
Fales Ceiling / Accaustic Ceiling 30x30 cm / m2 / S.Arbain	95.0	95.0	100.0	100.0	110.0	100.0	-	95.0	95.0	110.0	100.0	110.0	سقف مستعار / اكوستك 30*30 سم / 2م / السعودية	122
Fales Ceiling / Iron 60x60 , 5 m.m / m2 / U.A.E.	-	-	-	-	95.0	95.0	-	97.5	97.5	105.0	110.0	105.0	سقف مستعار / حديد 60*60 سم - 5 ملم / 2م / الإمارات	123

Commodity	السعر بالدرهم												التسلسل Serial No.	
	متوسط ديسمبر Dec. Ave.	متوسط نوفمبر Nov.Ave	متوسط أكتوبر Oct.Ave	متوسط سبتمبر Sep.Ave	متوسط أغسطس Aug.Ave	متوسط يوليو Jul.Ave	متوسط يونيو Jun.Ave.	متوسط مايو May Ave.	متوسط أبريل Apr.Ave.	متوسط مارس Mar .Ave.	متوسط فبراير Feb. Ave.	متوسط يناير Jan. Ave.		المواد
Marble Tiles /Garanite Labrador 60x30x2 cm / m2 / Italy	450.0	390.0	390.0	475.0	495.0	495.0	-	-	-	530.0	560.0	583.0	جرانيت لابرادور / 2م*30.60 سم / إيطاليا	84
Marble Tiles Perlato / Royal 30*60*2 cm / m2 / Italy	170.0	175.0	160.0	195.0	181.3	181.3	181.3	150.0	138.3	175.0	192.5	187.5	بلاط رخام برلاتو / رويال 30*60 سم / 2م / إيطاليا	85
Marble Tiles Perlato / cecelia 30*60*2 cm / m2 / Italy	145.0	132.0	124.0	155.0	145.0	145.0	145.0	128.8	135.0	140.0	187.5	160.0	بلاط رخام برلاتو / سيسيليا 30*60 سم / 2م / إيطاليا	86
Ceramic Tiles For Floor / 20x20/ m2 /Al Fujaira	28.0	24.0	24.0	24.0	23.5	23.5	23.5	24.0	24.0	24.0	-	-	بلاط سيراميك للأرضيات / 20*20 / 2م / الفجيرة	87
Ceramic Tiles For Floor / 20x20/ m2 /Ras Al kaima	23.7	23.0	22.3	23.3	22.3	22.3	22.3	22.0	21.0	23.0	22.5	22.5	بلاط سيراميك للأرضيات / 20*20 / 2م / رأس الخيمة	88
Ceramic Tiles For Floor / 20x20/ m2 /Spain	47.0	38.0	41.7	43.5	42.7	42.7	42.7	42.7	42.7	56.5	57.0	56.5	بلاط سيراميك للأرضيات / 20*20 / 2م / اسبانيا	89
Ceramic Tiles For Floor / 20x20/ m2 /Italy	50.7	43.5	47.3	49.5	46.0	46.0	46.0	46.0	46.0	56.5	60.0	60.0	بلاط سيراميك للأرضيات / 20*20 / 2م / إيطاليا	90
Ceramic Tiles For Floor Granneti / 7+10+20+109 / m2 / Ras Al kaima	-	-	53.0	47.5	47.5	47.5	47.5	51.5	51.5	53.0	61.5	61.0	بلاط سيراميك للأرضيات جرانيتي / 7+10+20+109 / 2م / رأس الخيمة	91
Ceramic Tiles For Floor Granneti / 100*100 / m2 / China	76.5	-	39.0	39.0	38.0	-	155.0	146.0	146.0	120.0	120.0	120.0	بلاط سيراميك للأرضيات جرانيتي / 100*100 / 2م / الصين	92
Ceramic Tiles For Wall / 40*25 / m2 / Ras Al kaima	25.0	25.0	25.3	28.0	26.7	-	25.0	27.0	23.0	23.0	23.5	24.5	بلاط سيراميك للجدران / 25.40 / 2م / رأس الخيمة	93
Ceramic Tiles For Wall Granneti / 20 x 20 cm / m2 / Ras Al kaima	24.0	23.0	22.5	24.0	22.5	22.5	22.5	22.5	24.5	23.0	23.0	-	بلاط سيراميك جرانيتي للجدران / 20*20 سم / 2م / رأس الخيمة	94
Ceramic Tiles For Wall Granneti / 30 x 30 cm / m2 / Ras Al kaima	46.0	-	24.5	-	40.0	-	35.0	35.5	35.5	45.0	45.0	47.5	بلاط سيراميك جرانيتي للجدران / 30*30 سم / 2م / رأس الخيمة	95
Ceramic Tiles For Wall Granneti /40 x 40 cm / m2 / Ras Al kaima	52.5	-	25.0	31.2	31.2	31.2	31.2	35.0	32.3	54.0	54.0	54.0	بلاط سيراميك جرانيتي للجدران / 40*40 سم / 2م / رأس الخيمة	96
Porcelain white tiles / 40*40 / m2 / Ras Al kaima	26.5	25.0	24.0	26.5	24.9	24.9	24.9	26.0	23.0	23.0	23.0	23.0	بلاط بورسلان أبيض / 40.40 سم / 2م / رأس الخيمة	97
Porcelain white tiles / 40*40 / m2 / Spain	50.5	61.5	65.0	60.0	52.3	52.3	52.3	75.0	65.0	65.0	65.0	65.0	بلاط بورسلان أبيض / 40.40 سم / 2م / اسبانيا	98
Porcelain white tiles / 20*30 / m2 / Al Fujaira	24.5	23.5	23.5	23.5	23.5	23.5	23.5	24.0	23.0	23.0	23.0	23.0	بلاط بورسلان أبيض / 20*30 سم / 2م / الفجيرة	99
Porcelain white tiles /20*30 / m2 / Spain	42.5	45.5	35.0	37.0	36.7	36.7	36.7	32.0	42.0	65.0	65.0	65.0	بلاط بورسلان أبيض / 20*30 سم / 2م / اسبانيا	100
Porcelain color tiles /10*10 / m2 / Spain	66.5	65.5	65.0	70.5	70.0	-	48.0	48.0	48.0	75.0	85.0	85.0	بلاط بورسلان ملون / 10*10 سم / 2م / اسبانيا	101
Porcelain color tiles / 25*20 / m2 / Spain	50.0	55.0	63.0	65.0	65.0	65.0	-	-	-	70.0	75.0	85.0	بلاط بورسلان ملون / 25*20 سم / 2م / اسبانيا	102
Sanitary Ware	الادوات الصحية													
Bathrom Set without Accessories	أطقم حمام كاملة بدون اللوازم													
Bathroom White Set / Oreint /Set / Ras Al kaima	777.0	850.0	835.0	950.0	852.5	838.3	838.3	850.0	850.0	840.0	845.0	850.0	أطقم حمام كاملة بدون اللوازم / أبيض / اورينت / طقم / رأس الخيمة	103
Bathroom White Set /Prime / Set / Ras Al kaima	1,214.0	-	1,276.5	1,276.5	1,400.0	1,276.5	1,276.5	1,310.0	1,310.0	1,350.0	1,355.0	1,360.0	أطقم حمام كاملة بدون اللوازم / أبيض / براين / طقم / رأس الخيمة	104



Commodity	السعر بالدرهم												التسلسل Serial No.	
	متوسط ديسمبر Dec. Ave.	متوسط نوفمبر Nov.Ave	متوسط أكتوبر Oct.Ave	متوسط سبتمبر Sep.Ave	متوسط أغسطس Aug.Ave	متوسط يوليو Jul.Ave	متوسط يونيو Jun.Ave.	متوسط مايو May Ave.	متوسط أبريل Apr.Ave.	متوسط مارس Mar .Ave.	متوسط فبراير Feb. Ave.	متوسط يناير Jan. Ave.		المواد
Bitumen / Oxidizesd Cold (Primer D 41) 20 liter / S. Arabia			-	-	-	-	-	38.8	35.6	45.0	45.0	45.0	مواد عازلة / بيتومين/ مؤكسد بارد سائل برايمردى 20/41 لتر/ السعودية	65
Bitumen / Waterproofing (D540)/ S. Arabia	100.0	100.0	110.0	110.0	110.0	110.0	110.0	117.5	110.0	110.0	110.0	110.0	مواد عازلة / بيتومين/ عازل سعودي ( D540 ) / درام/ السعودية	66
Bitumen / Waterproofing (D540M) aggregates / S. Arabia	110.0	110.0	115.0	115.0	115.0	115.0	115.0	125.0	115.0	115.0	115.0	115.0	مواد عازلة / بيتومين/ عازل سعودي ( D540M ) بالبحص/ درام/ السعودية	67
Bitumen / 60/70 / Ton	2,032.5	2,062.5	1,850.0	1,850.0	1,700.0	1,700.0	1,700.0	1,750.0	1,750.0	1,800.0	1,800.0	1,850.0	مواد عازلة / بيتومين/ 60/70 / طن	68
Bitumen / 60/70 barrel / 140 kg	-	-	260.0	260.0	260.0	260.0	260.0	275.0	275.0	320.0	300.0	320.0	مواد عازلة / بيتومين/ برميل 60/70 / 140 كجم	69
Bitumen / S S barrel / 1 ench / 200 kg	-	-	440.0	440.0	440.0	440.0	440.0	4,440.0	440.0	445.0	445.0	475.0	مواد عازلة / بيتومين/ برميل اس اس / 1 انش / 200 كجم	70
Bitumen / M S 70 barrel / 200 kg	-	-	690.0	690.0	690.0	690.0	690.0	690.0	675.0	675.0	650.0	650.0	مواد عازلة / بيتومين/ برميل ام اس 70 / 200 كجم	71
Bitumen / R C 250 barrel / 200 kg	-	-	750.0	750.0	750.0	750.0	750.0	750.0	750.0	775.0	775.0	775.0	مواد عازلة / بيتومين/ برميل ار سي 250 / 200 كجم	72
Waterproofing Bitumenous Memberane														
لغائف الاغشية														
Ekamat / 200/ m2 / S. Arabia	-	-	-	-	-	-	12.0	12.0	12.0	12.5	12.5	12.5	لغائف اغشية / إيكامات / 200 / 2م / السعودية	73
Ekamat / Double 400 / m2 / S. Arabia	-	-	-	-	-	-	-	-	-	13.5	13.5	13.5	لغائف اغشية / إيكامات / دبل 400 / 2م / السعودية	74
Natural Stone														
الحجر الطبيعي														
Natural Stone/Width 25 cm. height 3 cm kat-tran / White - Kattran /m2 / Jordan	90.0	80.0	70.0	70.0	70.0	75.0	75.0	75.0	75.0	75.0	85.0	85.0	حجر طبيعي / عرض 25 سم سمك 3 سم / أبيض - قطران/ 2م / الاردن	75
Natural Stone/Width 25 cm. height 3 cm kat-tran / Agloon / m2 / Jordan	130.0	130.0	130.0	130.0	130.0	135.0	135.0	135.0	135.0	110.0	117.5	115.0	حجر طبيعي / عرض 25 سم سمك 3 سم / عجلون / 2م / الاردن	76
Natural Stone/Width 25 cm. height 3 cm kat-tran / Maan/ m2 / Jordan	135.0	152.0	165.0	165.0	165.0	170.0	170.0	170.0	170.0	120.0	120.0	120.0	حجر طبيعي / عرض 25 سم سمك 3 سم / معان / 2م / الاردن	77
Tiles and Marble														
البلاط و الرخام														
Terrazzo Tiles / 30x30 cm / m2 / U.A.E.	26.0	26.0	24.0	24.0	24.5	24.5	24.5	27.3	27.7	26.0	-	-	بلاط موزاييك / 30*30 سم / 2م الإمارات	78
Terrazzo Tiles / 25x25 cm / m2 / U.A.E.	25.0	28.0	23.0	27.5	26.3	26.3	26.3	26.0	23.5	25.0	-	-	بلاط موزاييك / 25*25 سم / 2م الإمارات	79
Marble Tiles / Carrara 30*60*2 cm / m2 / Italy	125.0	125.0	136.7	140.0	155.0	155.0	155.0	123.8	136.7	140.0	172.5	172.5	بلاط رخام / كرارة موشنح 30*60*2 سم / 2م / إيطاليا	80
Marble Tiles / 40x40x2cm,White (Bynco B) / m2 / Italy	480.0	480.0	480.0	480.0	480.0	480.0	-	420.0	-	440.0	482.5	453.0	بلاط رخام / أبيض 40*40*2 سم / بيانكو بي / 2م / إيطاليا	81
Marble Tiles / Traventino40x40x2cm Beige / m2 / Italy	250.0	250.0	250.0	295.0	301.7	301.7	301.7	280.0	165.0	270.0	270.0	280.0	بلاط رخام / ترافنتينو 40*40*2 سم / بيج / 2م / إيطاليا	82
Marble Tiles /Arabskato40x40x2 cm / m2 / Italy	400.0	400.0	400.0	380.0	400.0	400.0	-	-	-	410.0	410.0	410.0	بلاط رخام / أرابسكاتو 40*40*2 سم / 2م / إيطاليا	83

Commodity	السعر بالدرهم												التسلسل Serial No.	
	متوسط ديسمبر Dec. Ave.	متوسط نوفمبر Nov.Ave	متوسط أكتوبر Oct.Ave	متوسط سبتمبر Sep.Ave	متوسط أغسطس Aug.Ave	متوسط يوليو Jul.Ave	متوسط يونيو Jun.Ave.	متوسط مايو May Ave.	متوسط أبريل Apr.Ave.	متوسط مارس Mar .Ave.	متوسط فبراير Feb. Ave.	متوسط يناير Jan. Ave.		المواد
White Plywood / 4x8x3.6 m.m / Sheet/ Indonesia	26.5	26.3	26.9	27.3	27.6	27.6	27.3	25.9	26.1	27.0	25.0	27.0	خشب بليوود أبيض / 3.6*8*4 ملم / لوح / إندونيسيا	45
White Plywood / 4x8x6 m.m / Sheet/ Indonesia	32.3	32.5	33.6	33.5	35.5	35.5	35.4	34.0	34.3	35.0	31.0	35.0	خشب بليوود أبيض / 6*8*4 ملم / لوح / إندونيسيا	46
White Plywood / 4x8x9 m.m / Sheet/ Indonesia	50.1	50.0	51.3	53.1	54.7	54.7	54.0	53.8	52.8	55.0	43.5	53.0	خشب بليوود أبيض / 9*8*4 ملم / لوح / إندونيسيا	47
White Plywood / 4x8x12 m.m / Sheet/ Indonesia	65.3	64.2	64.2	71.6	71.5	71.5	71.2	72.2	68.6	70.0	58.5	69.0	خشب بليوود أبيض / 12*8*4 ملم / لوح / إندونيسيا	48
White Plywood / 4x8x18 m.m / Sheet/ Indonesia	88.3	88.8	90.4	98.0	99.0	99.0	99.0	99.9	99.8	98.0	81.0	97.5	خشب بليوود أبيض / 18*8*4 ملم / لوح / إندونيسيا	49
Red Teak Faced Plywood / 3x7x3.6 m.m/ Sheet/ Indonesia	31.0	27.8	28.0	27.4	27.4	27.4	29.3	22.6	19.4	19.4	-	-	خشب بليوود (وجه تيك) أحمر / 3.6*7*3 ملم / لوح / اندونيسيا	50
Red Teak Faced Plywood / 4x8x3.6 m.m / Sheet/ Indonesia	42.8	42.0	40.5	42.0	41.3	41.3	42.0	38.8	39.0	50.0	-	-	خشب بليوود (وجه تيك) أحمر / 3.6*8*4 ملم / لوح / اندونيسيا	51
Marine Plywood Humidity Resistance / 12 m.m /Sheet/ Indonesia	99.4	105.0	105.6	105.6	105.8	105.8	100.6	88.9	91.4	94.0	80.0	92.5	مارين بليوود مقاوم للرطوبة / 12 ملم / لوح / اندونيسيا	52
Marine Plywood Humidity Resistance / 18 m.m /Sheet/ Indonesia	125.8	117.9	126.7	124.4	123.3	123.3	123.3	123.1	122.4	127.0	129.0	112.5	مارين بليوود مقاوم للرطوبة / 18 ملم / لوح / اندونيسيا	53
<b>Blook</b>													<b>الطابوق</b>	
Hollow / 4» 10x20x40 cm/Thousand / U.A.E.	2,500.0	2,500.0	2,500.0	2,500.0	2,500.0	2,500.0	2,500.0	2,664.6	2,730.0	2,500.0	2,540.0	2,540.0	طابوق أسمنتي / مفرغ / 40*20*10*4 سم / ألف / الإمارات	54
Hollow / 6 « 15x20x40 cm /Thousand U.A.E.	2,910.0	2,910.0	2,910.0	2,910.0	2,910.0	2,910.0	2,910.0	3,207.1	3,498.3	2,900.0	2,980.0	2,980.0	طابوق أسمنتي / مفرغ / 40*20*15*6 سم / ألف / الإمارات	55
Hollow / 8 « 20x20x40 cm /Thousand U.A.E.	3,230.0	3,530.0	3,530.0	3,530.0	3,530.0	3,530.0	3,530.0	3,647.5	3,716.7	3,500.0	3,650.0	3,650.0	طابوق أسمنتي / مفرغ / 40*20*20*8 سم / ألف / الإمارات	56
Solid / 4» 10x20x40 cm/Thousand / U.A.E.	2,970.0	2,970.0	2,970.0	2,970.0	2,970.0	2,970.0	2,970.0	3,617.1	3,605.0	3,000.0	3,030.0	3,030.0	طابوق أسمنتي / مصمت / 40*20*10*4 سم / ألف / الإمارات	57
Solid / 6 « 15x20x40 cm /Thousand / U.A.E.	4,080.0	4,080.0	4,080.0	4,080.0	4,080.0	4,080.0	4,080.0	4,470.0	4,415.0	3,700.0	4,000.0	4,000.0	طابوق أسمنتي / مصمت / 40*20*15*6 سم / ألف / الإمارات	58
Solid / 8 « 20x20x40 cm /Thousand / U.A.E.	4,740.0	4,740.0	4,740.0	4,740.0	4,740.0	5,100.0	5,100.0	4,743.8	4,333.3	4,000.0	4,200.0	4,200.0	طابوق أسمنتي / مصمت / 40*20*20*8 سم / ألف / الإمارات	59
Hourdis Hollow / 20x20x40 cm /Thousand / U.A.E.	3,700.0	3,700.0	3,700.0	3,700.0	3,700.0	3,700.0	3,700.0	3,440.0	3,500.0	3,850.0	3,850.0	3,850.0	هوردي مفرغ / 40*20*20 سم / ألف / الإمارات	60
Clay Tiles / Clay (Pica) / m3 / U.A.E.	53.5	53.5	53.5	53.5	53.5	53.5	53.5	48.7	45.6	46.90	-	-	قرميد / فخار / بيكا / 3م / الإمارات	61
<b>Roofing Materials</b>													<b>مواد التسقيف</b>	
Zinc Sheet / Corrugated 8 Feet / Strong / India	28.3	29.0	36.0	36.0	31.0	36.0	36.0	35.5	35.0	35.0	-	-	الواح زنك / مضلع 8 قدم / قوي/ الهند	62
Zinc Sheet / Corrugated 8 Feet / Light / India	17.2	18.5	-	-	22.0	-	20.0	19.9	19.3	19.0	-	-	الواح زنك / مضلع 8 قدم / خفيف/ الهند	63
<b>Waterproofing Products</b>													<b>المواد العازلة</b>	
Bitumen / Oxidized Hot(115/15) primer 180 kg / S . Arabia	-	-	-	-	-	-	-	363.1	390.0	390.0	390.0	390.0	مواد عازلة / بيتومين/ مؤكسد حار 15/115/برميل 180 كغ /السعودية	64

Commodity	السعر بالدرهم												التسلسل Serial No.	
	متوسط ديسمبر Dec. Ave.	متوسط نوفمبر Nov.Ave	متوسط أكتوبر Oct.Ave	متوسط سبتمبر Sep.Ave	متوسط أغسطس Aug.Ave	متوسط يوليو Jul.Ave	متوسط يونيو Jun.Ave.	متوسط مايو May Ave.	متوسط أبريل Apr.Ave.	متوسط مارس Mar .Ave.	متوسط فبراير Feb. Ave.	متوسط يناير Jan. Ave.		المواد
Steel / Peems Steel / Big / Ton / Okranai	-	-	3,012.5	3,050.0	3,000.0	3,150.0	3,150.0	3,225.0	3,200.0	3,000.0	-	4,800.0	حديد جصور / كبير / طن / اوكرانيا	21
Steel / Peems Steel / Small / Ton / Korea	3,200.0	2,400.0	2,562.5	2,700.0	2,575.0	2,650.0	2,475.0	2,725.0	2,700.0	3,000.0	3,200.0	3,200.0	حديد جصور / صغير / طن / كوريا	22
Steel / Peems Steel / Small / Ton / Japan	3,000.0	2,500.0	2,775.0	2,800.0	2,650.0	2,650.0	2,550.0	2,725.0	2,700.0	2,500.0	3,000.0	3,200.0	حديد جصور / صغير / طن / اليابان	23
Steel / Peems Steel / Small / Ton / Okranai	-	-	2,775.0	2,800.0	2,650.0	2,650.0	2,475.0	2,725.0	2,700.0	2,600.0	-	3,200.0	حديد جصور / صغير / طن / اوكرانيا	24
Steel / Steel Angled / Ton / Korea	-	2,466.7	2,487.5	2,600.0	2,400.0	2,666.7	2,600.0	2,500.0	2,400.0	2,100.0	2,700.0	2,700.0	حديد زوايا / طن / كوريا	25
Steel / Steel Angled / Ton / Okranai	-	-	2,575.0	2,600.0	2,400.0	2,666.7	2,600.0	2,450.0	2,400.0	2,700.0	2,700.0	2,700.0	حديد زوايا / طن / اوكرانيا	26
Steel / Steel Angled / Ton / Turkia	-	-	2,575.0	2,600.0	2,400.0	2,666.7	2,600.0	2,500.0	2,400.0	2,080.0	2,700.0	2,700.0	حديد زوايا / طن / تركيا	27
Steel / Bars, 6 - 8 m.m / Ton / Turkia	1,950.0	2,077.9	2,035.8	2,050.0	2,050.0	2,063.8	2,010.8	2,240.6	2,142.7	1,850.0	1,870.0	2,700.0	حديد ميروم / 6 - 8 ملم / طن / تركيا	28
Steel / Bars, 10-25 m.m / Ton / Qatar	-	2,450.0	2,364.2	2,256.7	2,201.7	2,340.8	2,312.5	2,130.2	2,128.1	1,850.0	-	2,350.0	حديد ميروم / 10 - 32 ملم / طن / قطر	29
Steel / Bars, 10-25 m.m / Ton / U.A.E.	1,950.0	1,942.5	1,986.0	2,087.5	1,987.1	2,034.0	2,020.0	2,108.3	2,120.8	1,850.0	1,875.0	2,700.0	حديد ميروم / 10 - 32 ملم / طن / الإمارات	30
Steel / Bars, 10-25 m.m / Ton / Turkia	1,950.0	1,942.5	1,996.3	2,125.0	1,924.6	2,004.4	2,124.8	2,103.1	2,130.2	1,850.0	1,860.0	2,325.0	حديد ميروم / 10 - 32 ملم / طن / تركيا	31
Steel / Hightensile Steel / Ton / Qatar	1,931.3	1,987.5	2,070.1	2,075.0	2,025.0	2,034.7	2,078.1	2,014.6	1,912.5	2,300.0	2,050.0	1,975.0	حديد حلزوني / طن / قطر	32
Steel / Hightensile Steel / Ton / Turkia	1,901.8	1,913.1	1,954.1	2,052.8	1,922.9	1,928.0	1,924.3	1,943.8	1,908.3	1,700.0	1,900.0	1,925.0	حديد حلزوني / طن / تركيا	33
Steel / Hightensile Steel / Ton / U.A.E.	1,903.9	1,925.6	1,970.0	2,034.6	1,927.9	1,936.4	1,927.1	1,950.0	1,908.3	2,100.0	1,915.0	1,925.0	حديد حلزوني / طن / الإمارات	34
B.R.C. Mesh / 6 m.m (142) / Piece / U.A.E.	77.5	77.5	76.0	78.8	78.8	80.6	81.1	81.5	83.1	75.0	90.0	140.0	شبكة حديد للأرضيات / 6 ملم (142) / قطعة / الإمارات	35
B.R.C. Mesh / 7 m.m (193) / Piece / U.A.E.	103.8	105.0	98.6	101.3	102.5	107.5	109.0	110.0	106.9	95.0	107.5	122.5	شبكة حديد للأرضيات / 7 ملم (193) / قطعة / الإمارات	36
B.R.C. Mesh / 8m.m (252) / Piece / U.A.E.	108.8	111.3	117.5	117.5	126.0	128.8	134.4	129.2	122.5	130.0	145.0	172.5	شبكة حديد للأرضيات / 8 ملم (252) / قطعة / الإمارات	37
Wire / Binding Wire / Bundle-10Kg / China	30.0	33.8	34.5	33.7	37.5	37.5	37.5	41.9	45.0	55.0	45.0	47.5	سلك / لتربيط الحديد / ربطة 10 كغ / الصين	38
Wood	الخشب													
White / White Wood / m3 / Chile	1,018.8	1,042.1	1,074.6	1,203.8	1,168.8	986.4	941.3	931.3	934.4	1,000.0	950.0	972.5	خشب أبيض / 3م / تشيلي	39
White / White Wood / m3 / Romania	1,004.0	1,027.5	1,055.0	1,101.9	1,108.3	1,009.6	964.2	966.6	974.4	1,000.0	965.0	995.0	خشب أبيض / 3م / رومانيا	40
Red Timber \ Big / Keruing/ sheet / Malaysia	75.0	75.0	82.5	75.5	75.5	75.5	-	85.0	80.0	86.0	70.0	95.0	خشب أحمر / كبير / كرنك / لوح / ماليزيا	41
Red Timber \ Big / Merionti/ sheet / Malaysia	74.4	70.5	77.2	80.2	75.3	72.8	75.8	76.1	75.0	78.0	-	95.0	خشب أحمر / كبير / ميرنتي / لوح / ماليزيا	42
Red Timber \ Small / Keruing/ sheet / Malaysia	55.0	60.0	75.0	65.0	-	60.3	-	65.5	71.0	55.0	-	55.0	خشب أحمر / صغير / كرنك / لوح / ماليزيا	43
Red Timber \ Small / Merionti/ sheet / Malaysia	58.3	57.0	60.8	60.5	56.0	56.0	60.1	61.5	68.0	55.0	-	55.0	خشب أحمر / صغير / ميرنتي / لوح / ماليزيا	44

Commodity	السعر بالدرهم												التسلسل Serial No.	
	متوسط ديسمبر Dec. Ave.	متوسط نوفمبر Nov.Ave	متوسط أكتوبر Oct.Ave	متوسط سبتمبر Sep.Ave	متوسط أغسطس Aug.Ave	متوسط يوليو Jul.Ave	متوسط يونيو Jun.Ave.	متوسط مايو May Ave.	متوسط أبريل Apr.Ave.	متوسط مارس Mar .Ave.	متوسط فبراير Feb. Ave.	متوسط يناير Jan. Ave.		المواد
Cement													الاسمنت	
Sulphate Resistance /Al- Ethad /Ton/ U.A.E.	290.0	300.0	321.3	330.0	342.5	350.0	352.5	365.0	405.0	400.0	530.0	550.0	مقاوم للأملاح / الاتحاد / طن / الإمارات	1
Sulphate Resistance /Emarate /Ton/ U.A.E.	305.0	315.0	320.0	315.0	320.0	347.5	347.5	362.5	440.0	400.0	520.0	540.0	مقاوم للأملاح / الإمارات / طن / الإمارات	2
Portland Cement / Al- Ethad / Ton / U.A.E.	280.0	290.0	311.3	320.0	333.8	341.3	355.0	408.8	367.9	395.0	420.0	440.0	عادي بورتلاند / الاتحاد / طن / الإمارات	3
White Cement / Al- Ethad / Ton / U.A.E.	555.0	555.0	555.6	555.0	565.0	570.0	573.1	559.4	573.3	580.0	600.0	600.0	إسمنت أبيض / الاتحاد / طن / الإمارات	4
Lime / Oman / Ton / Oman	1,250.0	1,250.0	1,250.0	1,250.0	1,250.0	1,250.0	1,320.0	1,250.0	995.0	910.0	1,250.0	1,250.0	نورة / عمان / طن / عمان	5
Gypsum / Oman / Ton / Oman	441.0	440.0	432.5	425.0	425.0	425.0	425.0	419.3	466.8	429.0	429.0	440.0	جيس / عمان / طن / عمان	6
Aggregates & Sand													البحص و الرمل	
Aggregates / Crush 3/4 / m3 / U.A.E.	75.0	65.0	65.0	65.0	65.0	65.0	65.0	65.0	70.6	75.0	75.0	75.0	بحص / كونكري مكسر 3/4 انش / م3 / الإمارات	7
Aggregates / Ordinary 3/4 / m3 / U.A.E.	65.0	57.5	57.5	57.5	57.5	57.5	57.5	57.5	60.2	65.0	65.0	65.0	بحص / مغريل 3/4 انش / م3 / الإمارات	8
Aggregates / Crush 3/8 / m3 / U.A.E.	75.0	70.0	70.0	70.0	70.0	70.0	70.0	70.0	75.0	75.0	75.0	75.0	بحص / كونكري مكسر 3/8 انش / م3 / الإمارات	9
Aggregates / Ordinary 3/8 / m3 / U.A.E.	65.0	65.0	65.0	65.0	65.0	65.0	65.0	65.0	65.0	65.0	65.0	65.0	بحص / مغريل مكسر 3/8 انش / م3 / الإمارات	10
Aggregates / Material Sand / m3 / U.A.E.	35.0	35.0	35.0	35.0	35.0	35.0	35.0	35.0	35.0	35.0	35.0	35.0	بحص / كدش / م3 / الإمارات	11
Sand / White / m3 / U.A.E.	30.0	30.0	30.0	30.0	30.0	30.0	30.0	30.0	30.6	30.0	30.0	30.0	الرمل / ابيض / م3 / الإمارات	12
Sand / Black / m3 / U.A.E.	45.0	45.0	45.0	45.0	45.0	45.0	45.0	45.0	45.4	45.0	45.0	45.0	الرمل / اسود / م3 / الإمارات	13
Sand / Red / m3 / U.A.E.	37.5	32.5	32.5	32.5	32.5	32.5	32.5	33.8	32.5	37.5	37.5	37.5	الرمل / احمر / م3 / الإمارات	14
Concrete													الخرسانة	
Concrete Ready Mix / Normal ( neutin 40) / m3/ U.A.E.	310.0	315.0	315.0	352.5	352.5	352.5	375.0	392.5	391.7	425.0	440.0	440.0	خرسانة جاهزة / عادي نيوتن 40 / م3 / الإمارات	15
Concrete Ready Mix / Sulphate Resistance / m3/ U.A.E.	320.0	322.5	322.5	363.8	363.8	363.8	382.5	397.5	406.3	430.0	450.0	450.0	خرسانة جاهزة / مقاوم للاملاح نيوتن 40 / م3 / الإمارات	16
Steel													الحديد	
Steel / Flat Steel / Ton / Turkia	2,500.0	2,300.0	2,400.0	2,400.0	2,200.0	2,250.0	2,243.8	2,425.0	2,275.0	2,900.0	2,700.0	2,800.0	حديد مبسط / طن / تركيا	17
Steel / Flat Steel / Ton / Dubai	2,500.0	2,300.0	2,433.3	2,400.0	2,300.0	2,300.0	2,243.8	2,537.5	2,500.0	2,900.0	-	2,650.0	حديد مبسط / طن / دبي	18
Steel / Peems Steel / Big / Ton / Korea	2,800.0	2,500.0	2,706.3	3,050.0	3,000.0	3,150.0	2,987.5	3,225.0	3,200.0	4,100.0	4,400.0	4,800.0	حديد جسور / كبير / طن / كوريا	19
Steel / Peems Steel / Big / Ton / Japan	3,000.0	-	2,920.8	2,866.7	2,666.7	3,150.0	3,166.7	3,225.0	3,200.0	3,000.0	-	4,800.0	حديد جسور / كبير / طن / اليابان	20

